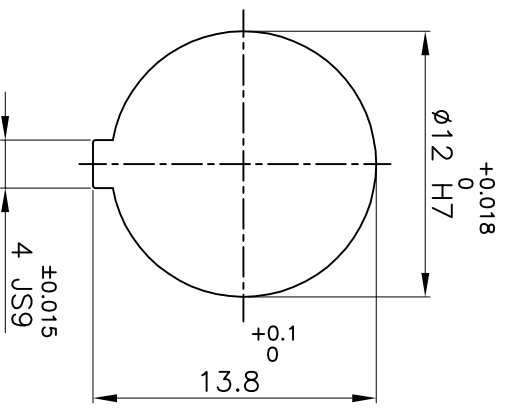
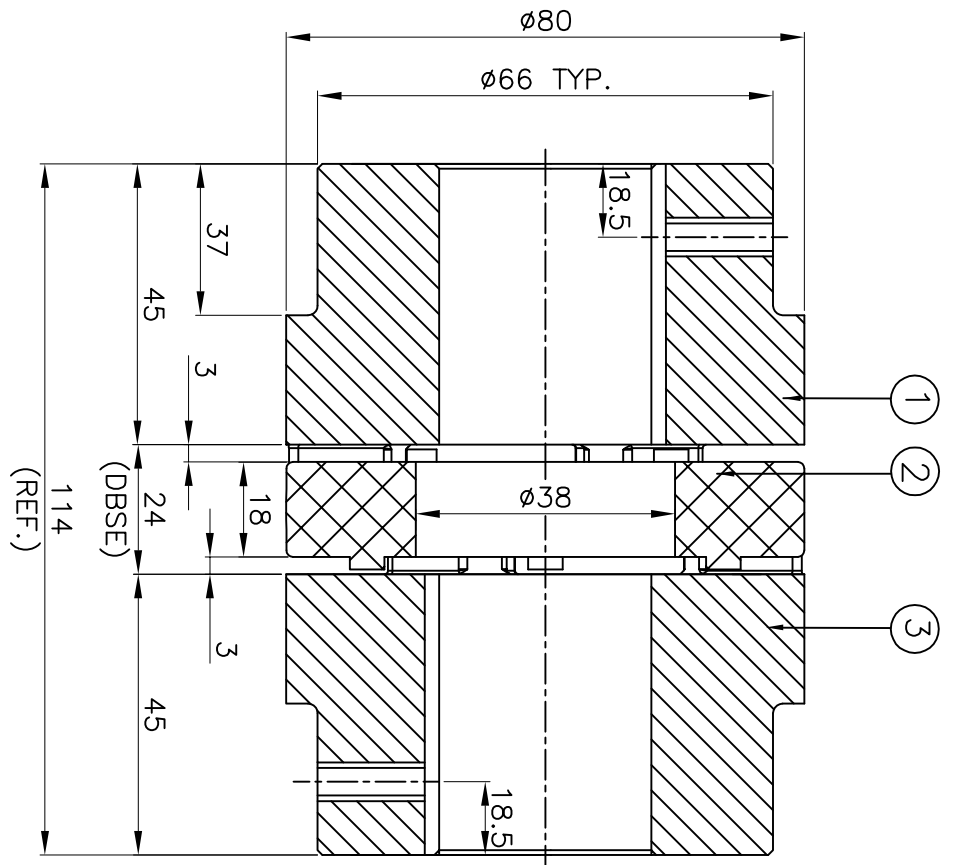


DRIVE SIDE



DRIVEN SIDE

APPLICATION DETAILS

APPLICATION	-
RATED POWER	- KW
RATED SPEED	- RPM
RATED TORQUE	- Nm
A.S.F.	-

COUPLING CAPACITY

COUPLING RATING	4.21KW AT 100RPM.
RATED TORQUE	402Nm
MAX. BORE TYPE-I	40mm
WEIGHT (APPROX)	2.0kg
INERTIA (WK ²)	1.85X10 ⁻³ kg-m ²

MAX. MISALIGNMENT

AXIAL	±2.2mm
ANGULAR	0.90°
PARALLEL	0.25mm

S/N	SR NO	DESCRIPTION	MATERIAL	QTY.
3	HUB-I	C.I IS:210		1
2	SPIDER	POLYURETHANE (LIGHT WORY)		1
1	HUB-I	C.I IS:210		1

TITLE: **RRJ-38 1/1 /-----**
 CPLG. **REFER TABLE**
 CUSTOMER NAME: **RAHI**

RAHI RATHI TRANSPOWER PVT LTD
 PUNE 411006
 DRG. No.: **R/L-----**
 3 EN-F-112