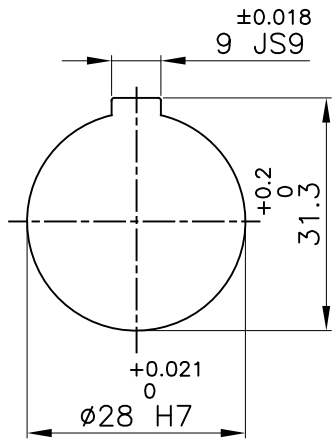
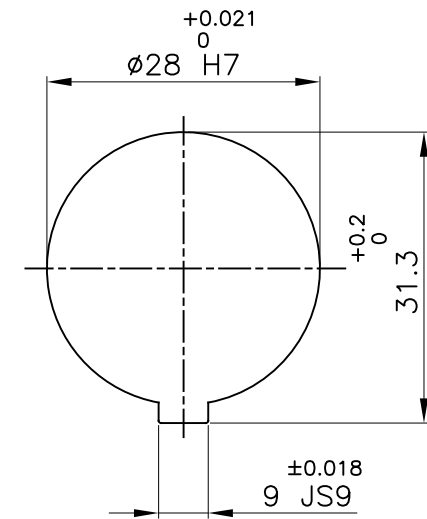
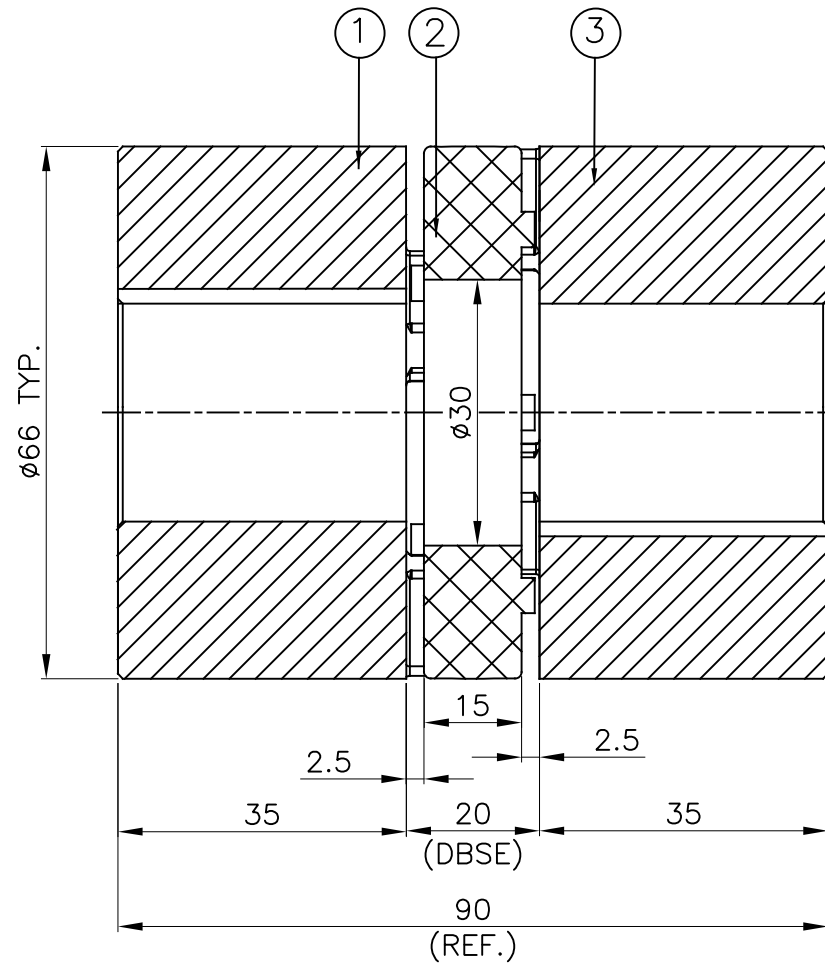


J I H G F E D C B A

8
7
6
5
4
3
2
1



DRIVE SIDE



DRIVEN SIDE

APPLICATION DETAILS

APPLICATION	-
RATED POWER	- KW
RATED SPEED	- RPM.
RATED TORQUE	- Nm
A.S.F.	-

COUPLING CAPACITY

COUPLING RATING	2.07KW AT 100RPM.
RATED TORQUE	198 Nm
MAX. BORE TYPE-II	38mm
WEIGHT (APPROX)	0.54kg
INERTIA (WK ²)	42X10 ⁻⁵ kg-m ²

MAX. MISALIGNMENT

AXIAL	±2.0mm
ANGULAR	0.80°
PARALLE	0.20mm

3	HUB-II	ALUMINIUM	1
2	SPIDER	POLYURETHANE (LIGHT LVORY)	1
1	HUB-II	ALUMINIUM	1
SR NO	DESCRIPTION	MATERIAL	QTY.

REV.	DMRN NO.	DESCRIPTION	REV. BY	APPD. BY	DATE

TITLE: **RRJ-28 II/II /-----**
CPLG.

MATERIAL: **REFER TABLE**

CUSTOMER NAME: -

AUTHORITY	INITIALS	SIGN	DATE
DRAWN	-	-	-
CHECKED	-	-	-
APPROVED	-	-	-

SCALE: NTS REF. No.: -

RATHI RATHI TRANSPOWER PVT LTD PUNE 411014 DRG. No.: -----/-

This drawing / information / design is the property of Rathi Transpower Pvt. Ltd. It is confidential & must not be made public or copied without prior written authorization & is subjected to recall at any time. Acceptance of this drawing constitutes full agreement with these conditions