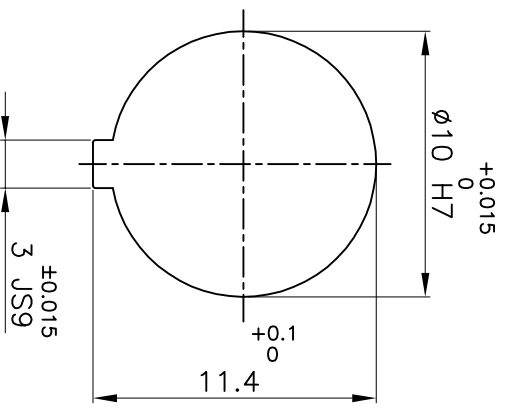
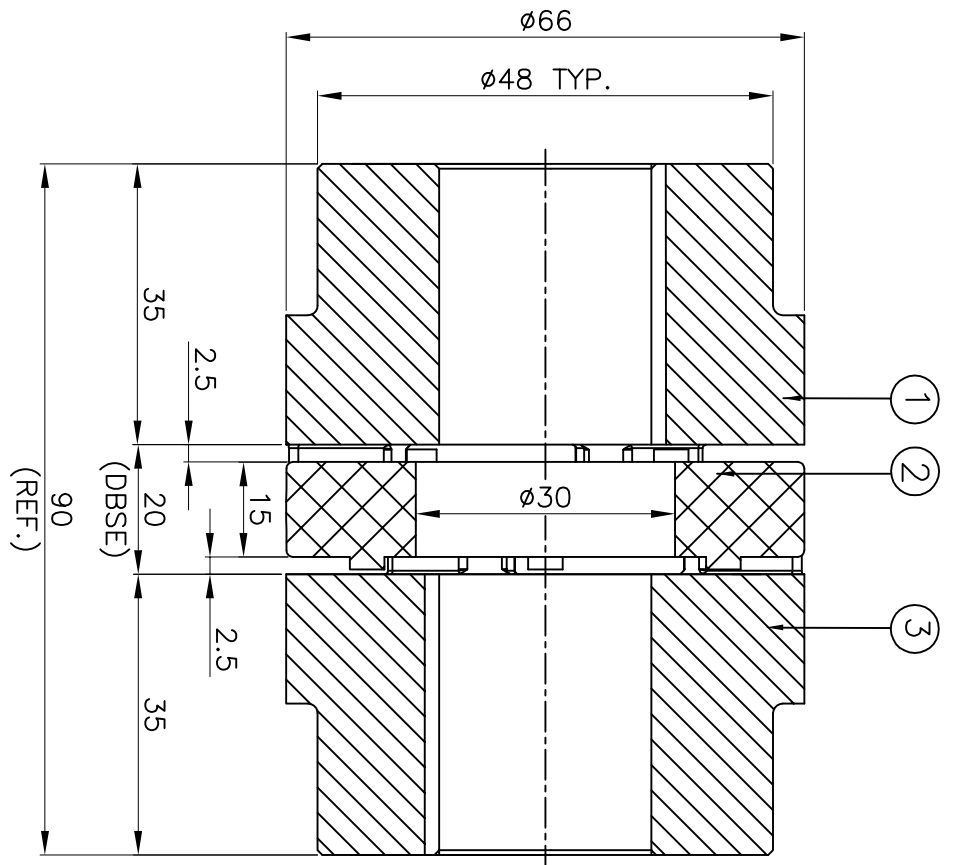


**DRIVE SIDE**



**DRIVEN SIDE**

**APPLICATION DETAILS**

APPLICATION	-
RATED POWER	- KW
RATED SPEED	- RPM
RATED TORQUE	- Nm
A.S.F.	-

**COUPLING CAPACITY**

COUPLING RATING	2.07KW AT 100RPM.
RATED TORQUE	198Nm
MAX. BORE TYPE-I	10mm
WEIGHT (APPROX)	0.39kg
INERTIA (WK <sup>2</sup> )	20X10 <sup>-5</sup> kg-m <sup>2</sup>

**MAX. MISALIGNMENT**

AXIAL	±2.0mm
ANGULAR	0.80°
PARALLE	0.20mm

S/N	SR NO	DESCRIPTION	MATERIAL	QTY.
3	HUB-I	ALUMINIUM		1
2	SPIDER	POLYURETHANE (LIGHT WORY)		1
1	HUB-I	ALUMINIUM		1

TITLE: **RRJ-28 1/1 /-----**  
 CPLG. REFER TABLE  
 MATERIAL: ALUMINIUM  
 CUSTOMER NAME: -  
 AUTHORITY INITIALS: -  
 DRAWN: -  
 CHECKED: -  
 APPROVED: -  
 SCALE: NTS REF. No.: -  
 DRG. No.: R/L-----/-

REV. DMRN NO. DESCRIPTION REV. BY APPD. BY DATE

**RATHI** RATHI TRANSPOWER PVT LTD PUNE 411006

3 EN-F-112