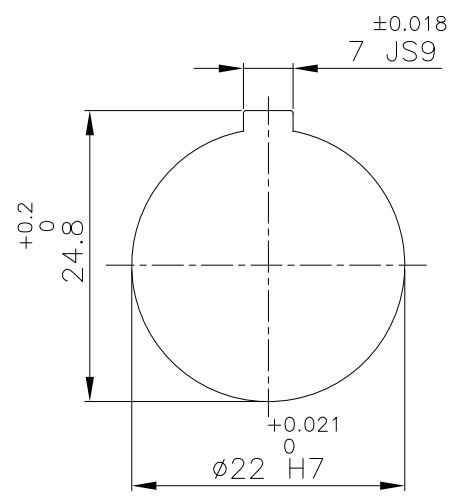
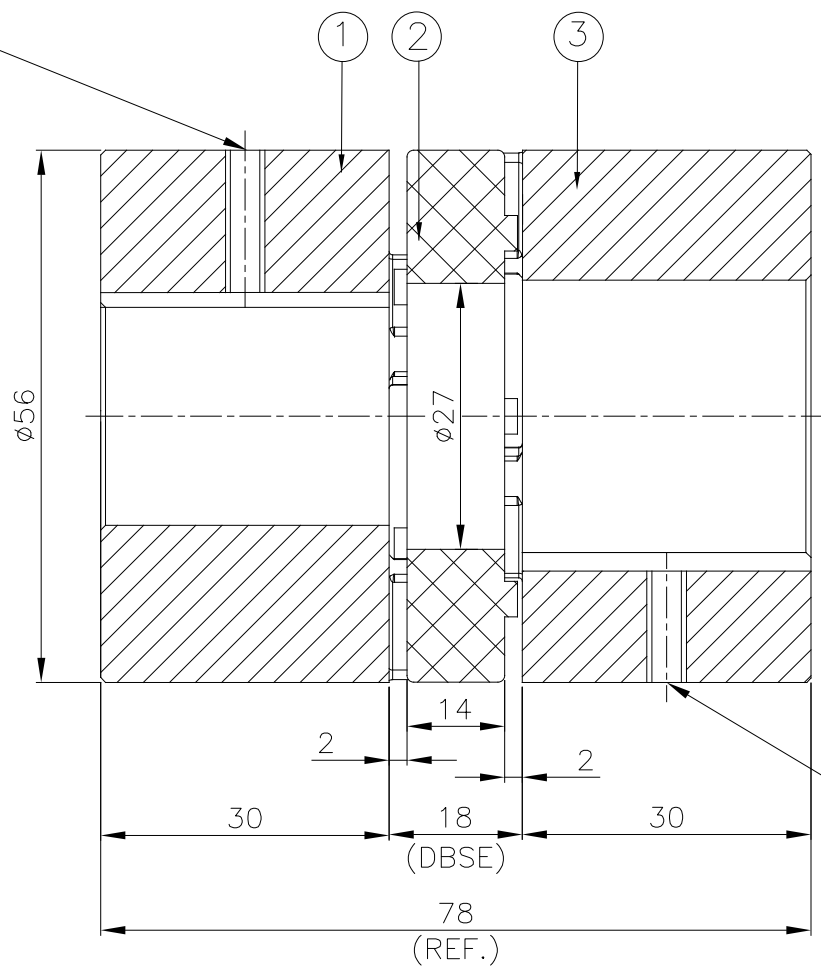


J I H G F E D C B A

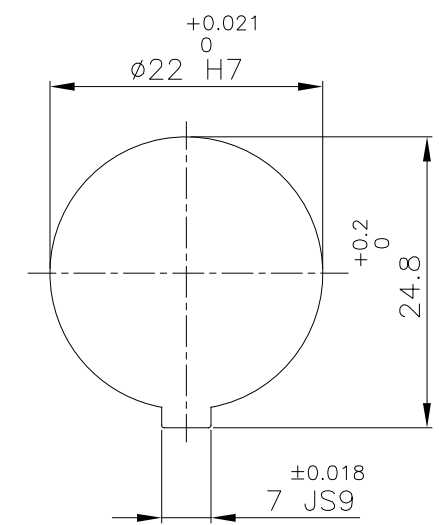
M5X0.8P TAPPED HOLE FOR SET SCREW ON KEYWAY.



DRIVE SIDE



M5X0.8P TAPPED HOLE FOR SET SCREW ON KEYWAY.



DRIVEN SIDE

**APPLICATION DETAILS**

APPLICATION	-
RATED POWER	- KW
RATED SPEED	- RPM.
RATED TORQUE	- Nm
A.S.F.	-

**COUPLING CAPACITY**

COUPLING RATING	0.35kW AT 100RPM.
RATED TORQUE	33 Nm
MAX. BORE TYPE-II	28mm.
WEIGHT (APPROX)	0.34kg
INERTIA (WK <sup>2</sup> )	19X10 <sup>-5</sup> kg-m <sup>2</sup>

**MAX. MISALIGNMENT**

AXIAL	±1.8mm
ANGULAR	0.80°
PARALLE	0.20mm

3	HUB-II	ALUMINIUM	1
2	SPIDER	POLYURETHANE (GRAY)	1
1	HUB-II	ALUMINIUM	1
SR NO	DESCRIPTION	MATERIAL	QTY.

REV.	DMRN NO.	DESCRIPTION	REV. BY	APPD. BY	DATE

TITLE: **RRJ-24 II/II /----- CPLG.**

MATERIAL: **REFER TABLE**

CUSTOMER NAME: -

AUTHORITY	INITIALS	SIGN	DATE
DRAWN	-	-	-
CHECKED	-	-	-
APPROVED	-	-	-

SCALE: NTS REF. No.:

DRG. No.: **R/L-----/-**

**RATHI** **RATHI TRANSPower PVT LTD** **PUNE 411014**

This drawing / information / design is the property of Rathi Transpower Pvt. Ltd. It is confidential & must not be made public or copied without prior written authorization & is subjected to recall at any time. Acceptance of this drawing constitutes full agreement with these conditions