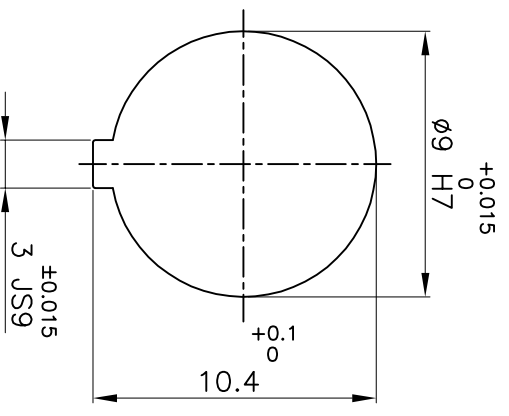
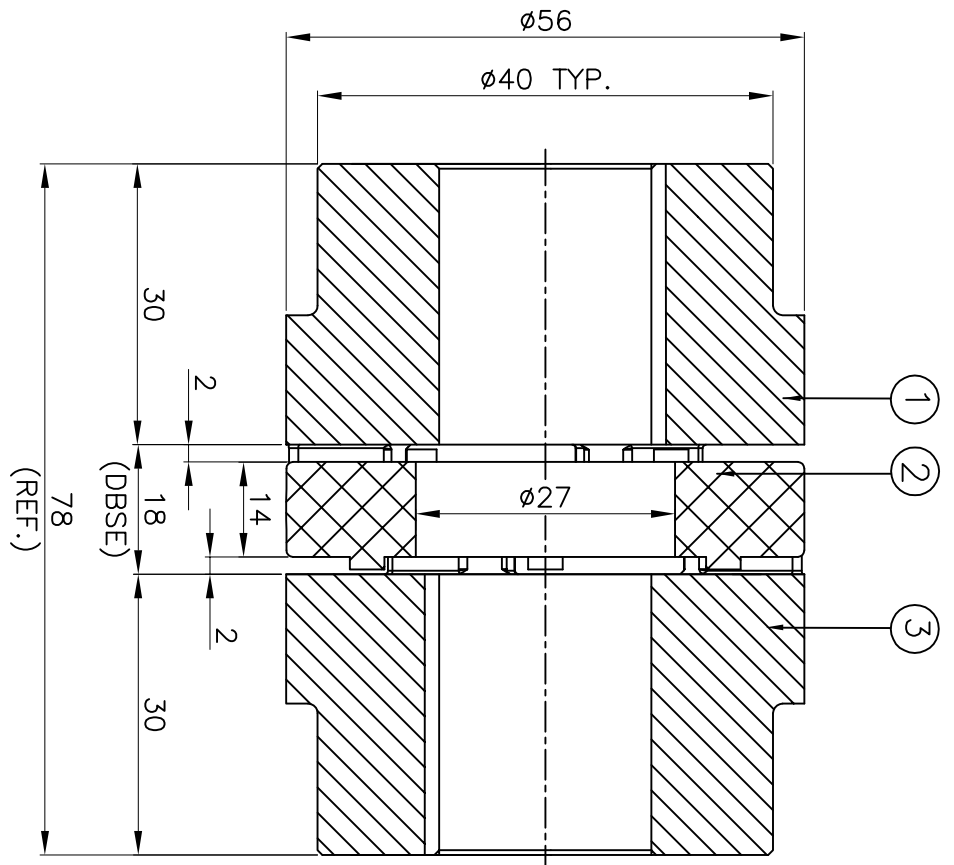


**DRIVE SIDE**



**DRIVEN SIDE**

**APPLICATION DETAILS**

APPLICATION	-
RATED POWER	- KW
RATED SPEED	- RPM
RATED TORQUE	- Nm
A.S.F.	-

**COUPLING CAPACITY**

COUPLING RATING	0.80KW AT 100RPM.
RATED TORQUE	76 Nm
MAX. BORE TYPE-I	9
WEIGHT (APPROX)	0.24kg
INERTIA (WK <sup>2</sup> )	9X10 <sup>-5</sup> kg-m <sup>2</sup>

**MAX. MISALIGNMENT**

AXIAL	±1.8mm
ANGULAR	0.80°
PARALLE	0.20mm

Sr NO	DESCRIPTION	MATERIAL	QTY.
3	HUB-I	ALUMINIUM	1
2	SPIDER	POLYURETHANE (LIGHT WORY)	1
1	HUB-I	ALUMINIUM	1

TITLE: **RRJ-24 1/1 /- - - - -**  
 CPLG. REFER TABLE  
 MATERIAL: ALUMINIUM, POLYURETHANE (LIGHT WORY)  
 CUSTOMER NAME: -  
 AUTHORITY INITIALS: -  
 DRAWN: -  
 CHECKED: -  
 APPROVED: -  
 SCALE: NTS REF: No.: -  
 DATE: -

REV. DWGN NO. DESCRIPTION REV. BY APPD. BY DATE

**RATHI** RATHI TRANSPOWER PVT LTD PUNE 411014 DRG. No.: R/L- - - - - / -