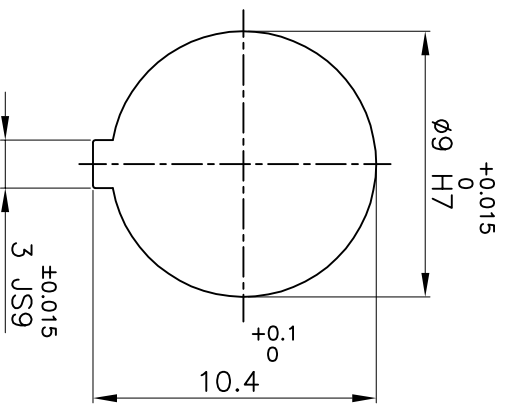
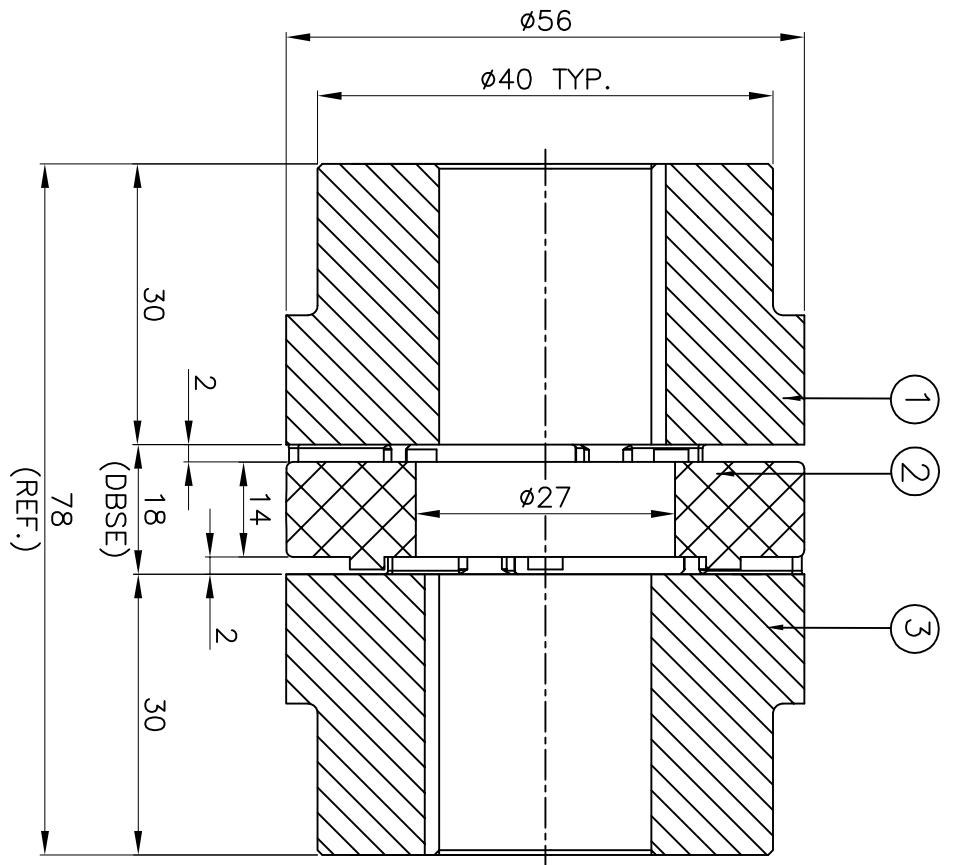


**DRIVE SIDE**



**DRIVEN SIDE**

**APPLICATION DETAILS**

APPLICATION	-
RATED POWER	- KW
RATED SPEED	- RPM
RATED TORQUE	- Nm
A.S.F.	-

**COUPLING CAPACITY**

COUPLING RATING	0.35KW AT 100RPM.
RATED TORQUE	33 Nm
MAX. BORE TYPE-I	9
WEIGHT (APPROX)	0.24kg
INERTIA (WK <sup>2</sup> )	9X10 <sup>-5</sup> kg-m <sup>2</sup>

**MAX. MISALIGNMENT**

AXIAL	±1.8mm
ANGULAR	0.80°
PARALLE	0.20mm

S/N	SR NO	DESCRIPTION	MATERIAL	QTY.
3	HUB-I	HUB-I	ALUMINIUM	1
2	SPIDER	SPIDER	POLYURETHANE (GRAY)	1
1	HUB-I	HUB-I	ALUMINIUM	1

TITLE: **RRJ-24 1/1 /- - - - -**  
 CPLG.  
 MATERIAL: **REFER TABLE**  
 CUSTOMER NAME: **RRJ-24 1/1 /- - - - -**

RAHI RATHI TRANSPOWER PVT LTD PUNE 411014

REV. NO.	REV. BY	APPD. BY	DATE

DRG. No.: **R/L- - - - - / -**  
 3 EN-F-112