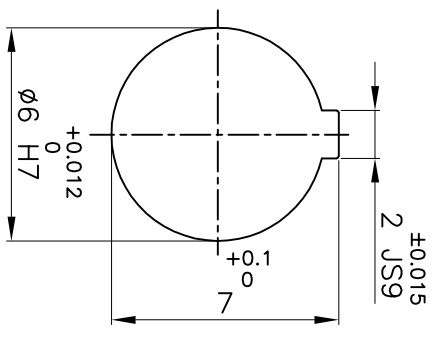


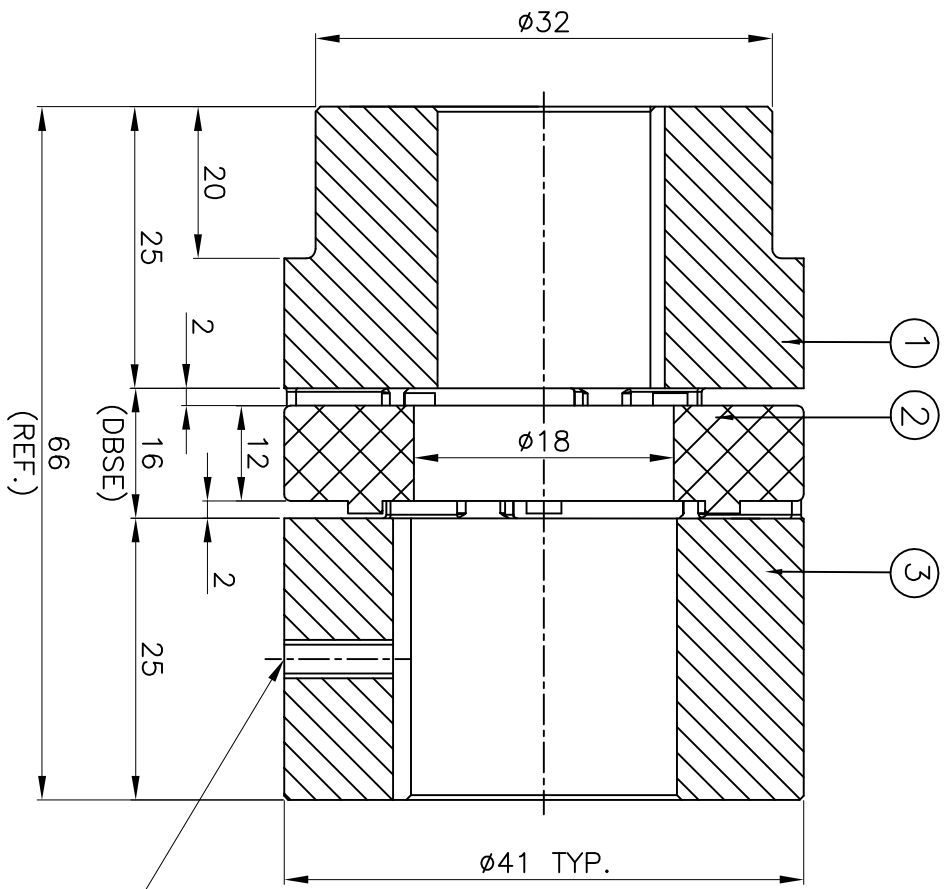
IF IN DOUBT, PLEASE ASK

DO NOT SCALE ALL DIMENSIONS ARE IN mm

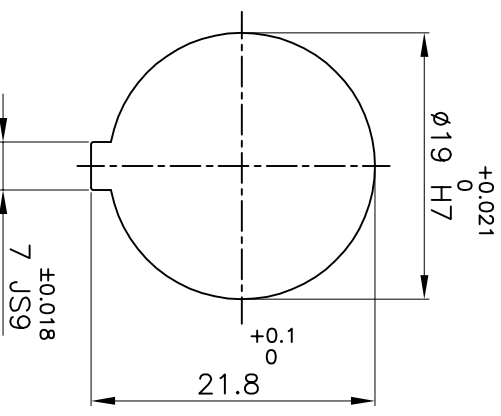
J I H G F E D C B A



DRIVE SIDE



DRIVEN SIDE



M5X0.8P TAPPED HOLE
FOR SET SCREW ON KEYWAY.

APPLICATION DETAILS

APPLICATION	-
RATED POWER	- KW
RATED SPEED	- RPM.
RATED TORQUE	- Nm
A.S.F.	-
COUPLING CAPACITY	
COUPLING RATING	0.18KW AT 100RPM.
RATED TORQUE	18 Nm
MAX. BORE TYPE-I & II	19 & 24mm.
WEIGHT (APPROX)	0.14kg
INERTIA (WK ²)	4.3X10 ⁻⁵ kg-m ²
MAX. MISALIGNMENT	
AXIAL	±1.6mm
ANGULAR	0.80°
PARALLE	0.15mm

REV.	DMEN NO.	DESCRIPTION	REV. BY	APPD. BY	DATE

TITLE:	RRJ-19 I/II /-----	MATERIAL:	REFER TABLE
CUSTOMER NAME:	-	AUTHORITY INITIALS / SIGN	-
SR NO	DESCRIPTION	MATERIAL	QTY.
3	HUB-II	ALUMINIUM	1
2	SPIDER	POLYURETHANE (BLUE)	1
1	HUB-I	ALUMINIUM	1

RAJHI RATHI TRANSPOWER PVT LTD
PUNE 411014

SCALE: NTS REF. No.:
APPROVED: -
CHECKED: -
DRAWN: -
DATE: -

Drsg. No.: -
3 EN-F-112

This drawing / information / design is the property of Rathi Transpower Pvt. Ltd. It is confidential & must not be made public or copied without prior written authorization & is subjected to recall at any time. Acceptance of this drawing constitutes full agreement with these conditions