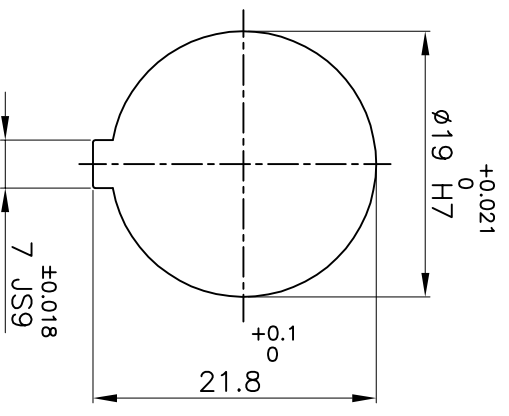
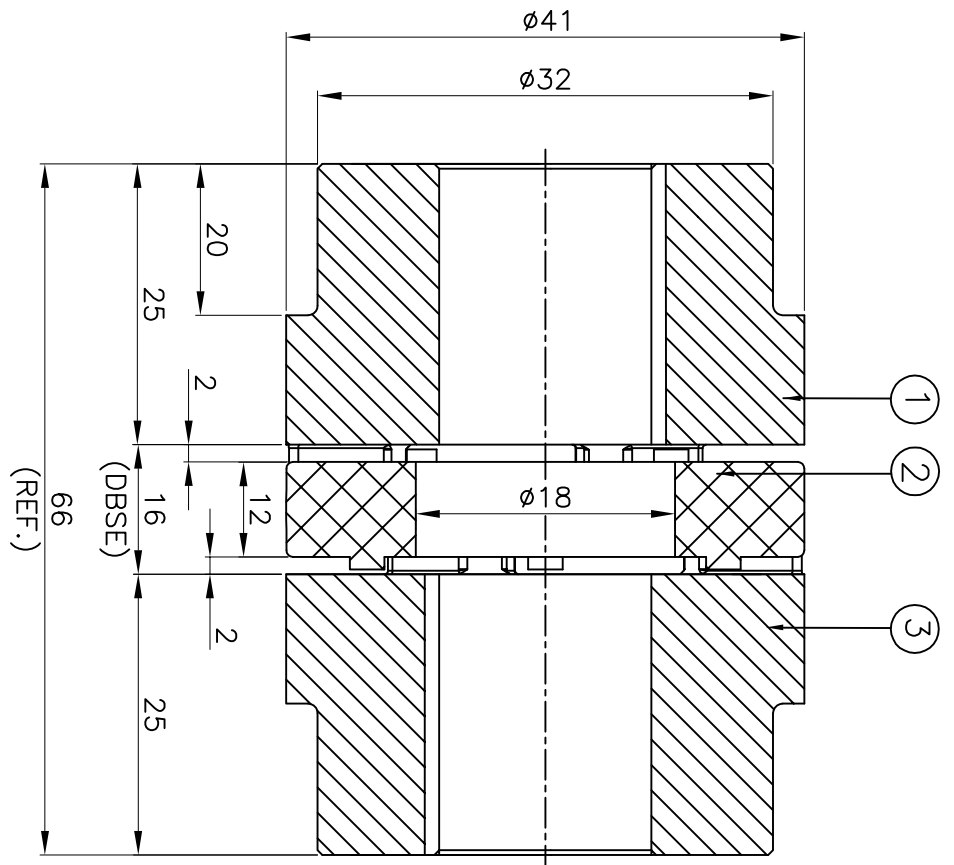


**DRIVE SIDE**



**DRIVEN SIDE**

(REF.)

**APPLICATION DETAILS**

APPLICATION	-
RATED POWER	- KW
RATED SPEED	- RPM
RATED TORQUE	- Nm
A.S.F.	-

**COUPLING CAPACITY**

COUPLING RATING	0.22KW AT 100RPM.
RATED TORQUE	21 Nm
MAX. BORE TYPE-I	19
WEIGHT (APPROX)	0.11kg
INERTIA (WK <sup>2</sup> )	2.3X10 <sup>-5</sup> kg-m <sup>2</sup>

**MAX. MISALIGNMENT**

AXIAL	±1.6mm
ANGULAR	0.80°
PARALLE	0.15mm

SERIAL NO	DESCRIPTION	MATERIAL	QTY.
3	HUB-I	ALUMINIUM	1
2	SPIDER	POLYURETHANE (LIGHT WARY)	1
1	HUB-I	ALUMINIUM	1

TITLE: **RRJ-19 1/1 /-----**  
 CPLG. REFER TABLE  
 MATERIAL: ALUMINIUM  
 CUSTOMER NAME: -  
 AUTHORITY INITIALS: -  
 DRAWN: -  
 CHECKED: -  
 APPROVED: -  
 SCALE: NTS REF: No.: -  
 DATE: -



RATHI TRANSPOWER PVT LTD  
 PUNE 411006

DRG. No.: -----  
 3 EN-F-112