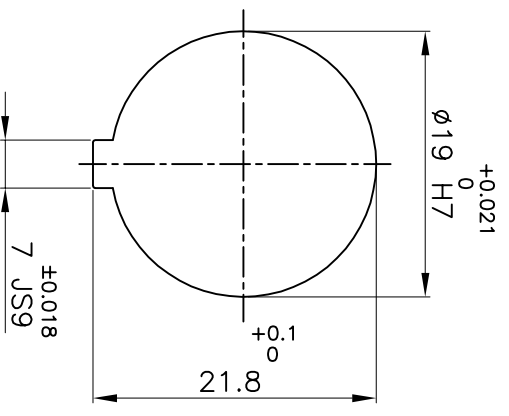
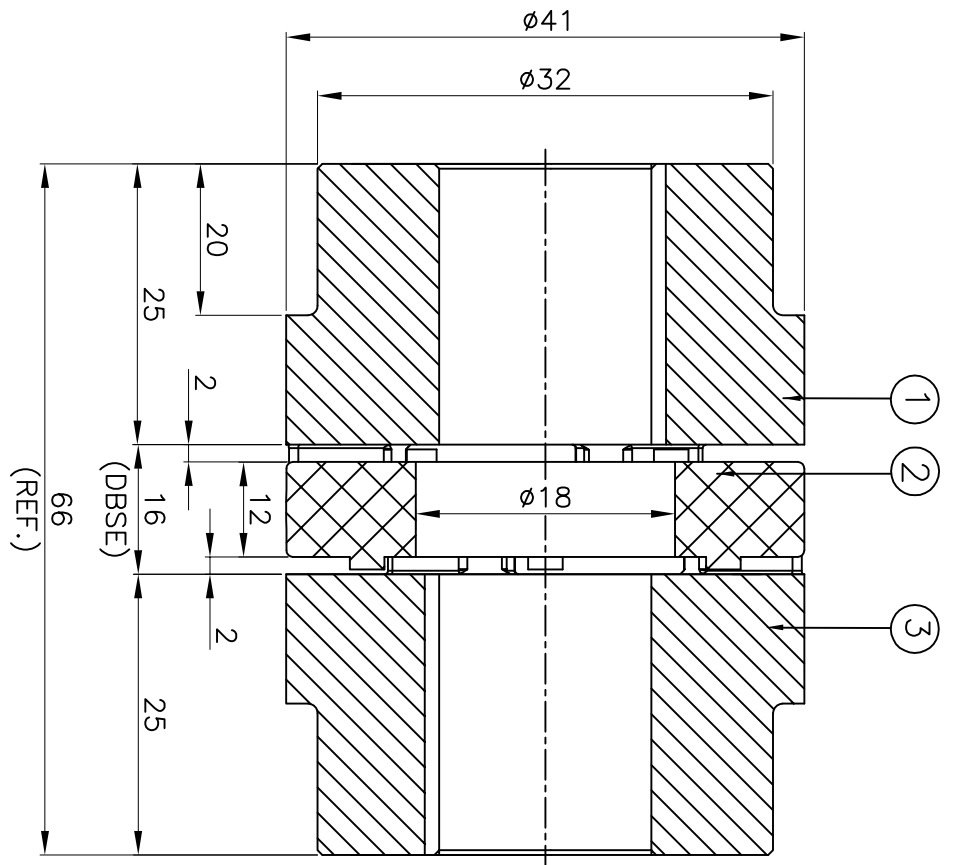


DRIVE SIDE



DRIVEN SIDE

APPLICATION DETAILS

APPLICATION	-
RATED POWER	- KW
RATED SPEED	- RPM
RATED TORQUE	- Nm
A.S.F.	-

COUPLING CAPACITY

COUPLING RATING	0.1KW AT 100RPM.
RATED TORQUE	10 Nm
MAX. BORE TYPE-I	19
WEIGHT (APPROX)	0.11kg
INERTIA (WK ²)	2.3X10 ⁻⁵ kg-m ²

MAX. MISALIGNMENT

AXIAL	±1.6mm
ANGULAR	0.80°
PARALLEL	0.15mm

S/N	DESCRIPTION	MATERIAL	QTY.
3	HUB-II	ALUMINIUM	1
2	SPIDER	POLYURETHANE (GRAY)	1
1	HUB-I	ALUMINIUM	1

TITLE: **RRJ-19 1/1 /-----**
 CPLG. REFER TABLE
 CUSTOMER NAME: -
 MATERIAL: ALUMINIUM, POLYURETHANE (GRAY)
 AUTHORITY INITIALS: - SIGN: - DATE: -
 DRAWN: - CHECKED: - APPROVED: -
 SCALE: NTS/REF: No.: -

RATHI RATHI TRANSPOWER PVT LTD PUNE 411006
 DRG. No.: R/L-----/-
 3 EN-F-112