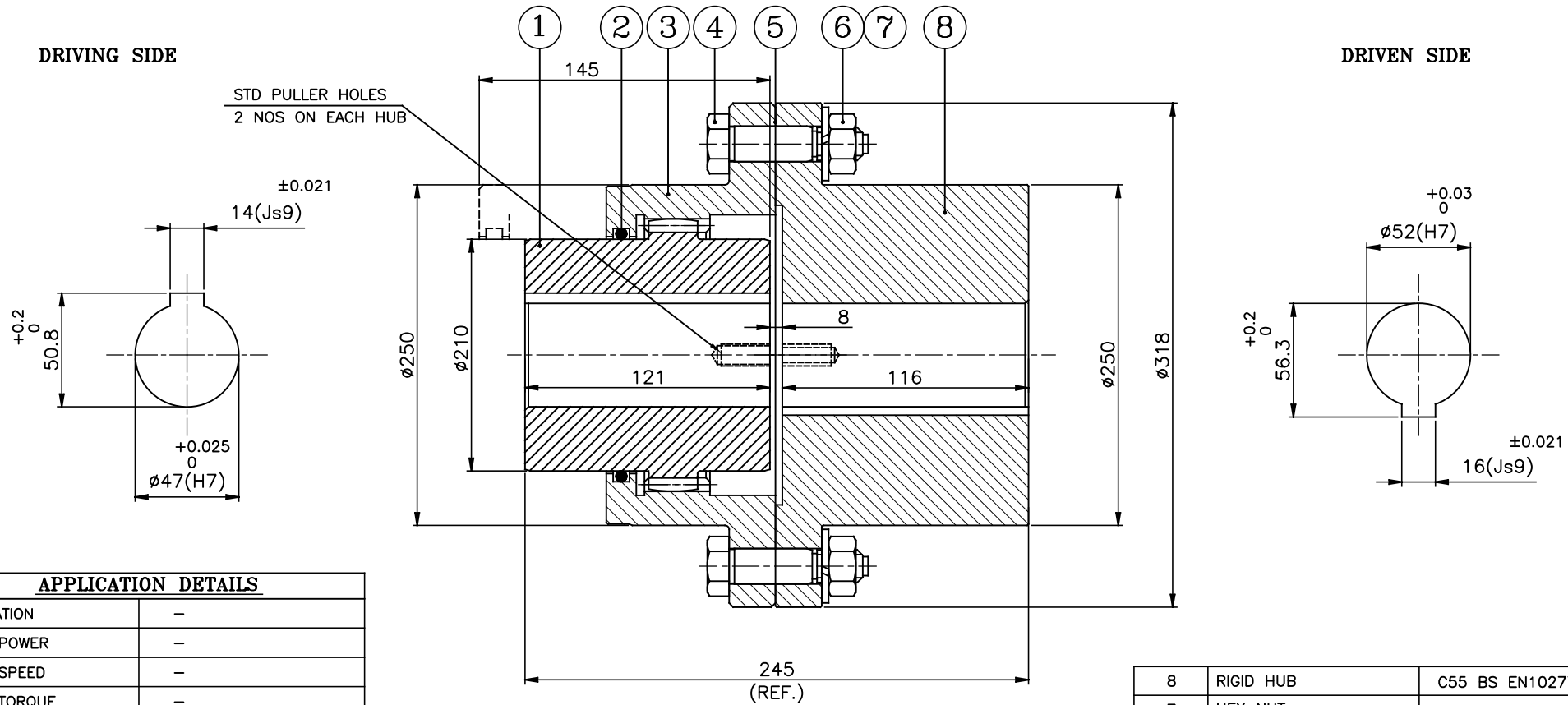


DRIVING SIDE

DRIVEN SIDE



APPLICATION DETAILS

APPLICATION	-
RATED POWER	-
RATED SPEED	-
RATED TORQUE	-
A.S.F.	-

COUPLING SPECIFICATION

COUPLING RATING	336 kW @ 100 RPM
RATED TORQUE	32.086 kNm.
PEAK TORQUE	64.172 kNm
MAX. SPEED	3600 rpm
MAX. BORE	FLEX HUB 160 mm RIGID HUB 180 mm
INERTIA(WK ²)	0.967 Kg ^m ²
WEIGHT(Approx.)	100 kg

ONLY CPLG HUBS TO BE DYNAMICALLY BALANCED TO Gr. 6.3, ISO-1940-1

MAX. MISALIGNMENTS

AXIAL DEFLECTION	±0.5 mm
ANGULAR DEFLECTION	±2° Deg./Gear mesh

NOTE:-

- * GREASE PLUG ON BOTH SLEEVES WILL BE PROVIDED FOR LUBRICATION.
- * TIGHTENING TORQUE OF THE BOLT(S.NO.-4) - 167 Nm
- * GREASE QTY.- 0.395 Kg (CUSTOMER'S SCOPE)

8	RIGID HUB	C55 BS EN10277-2	1
7	HEX NUT	H.T.S.	8
6	SPRING WASHER	SPRING STEEL	8
5	GASKET	NON ASBESTOS PAPER	1
4	HEX HEAD FIT BOLTS	H.T.S.	8
3	SLEEVE	C55 BS EN10277-2	1
2	'O' RING	NITRILE RUBBER	1
1	FLEX. HUB	C55 BS EN10277-2	1
SR.NO.	DESCRIPTION	MATERIAL	QTY.

REV.	DMRN NO.	DESCRIPTION	REV. BY	APPD. BY	DATE

TITLE: **RGS-40/-COUPLING**

CUSTOMER NAME: _____

SCALE: NTS REF. No.: _____

RATHI RATHI TRANSPower PVT LTD PUNE 411014

DRG. No.: _____

This drawing / information / design is the property of Rathi Transpower Pvt. Ltd. It is confidential & must not be made public or copied without prior written authorization & is subjected to recall at any time. Acceptance of this drawing constitutes full agreement with these conditions