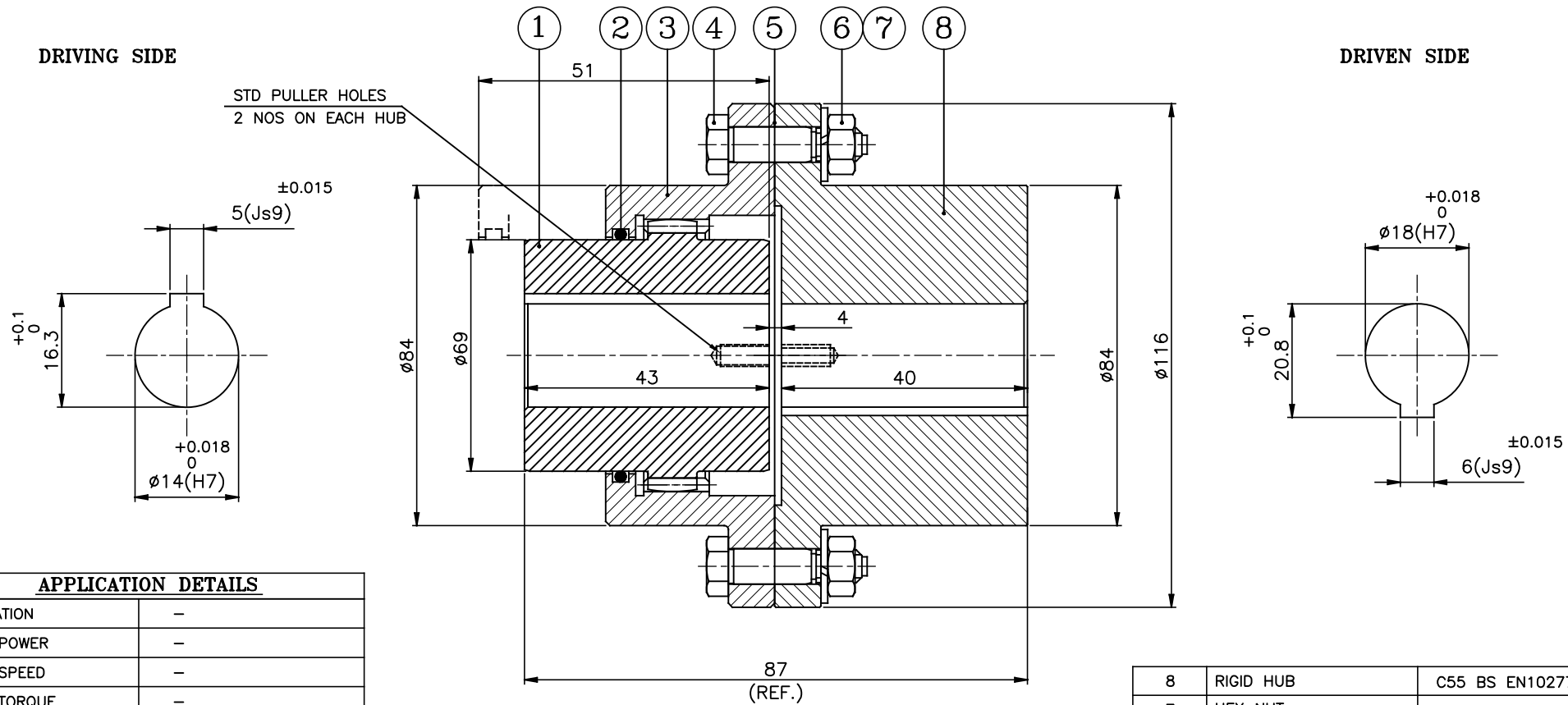


J I H G F E D C B A

8
7
6
5
4
3
2
1

DRIVING SIDE

DRIVEN SIDE



APPLICATION DETAILS

APPLICATION	-
RATED POWER	-
RATED SPEED	-
RATED TORQUE	-
A.S.F.	-

COUPLING SPECIFICATION

COUPLING RATING	14 kW @ 100 RPM
RATED TORQUE	1.337 kNm.
PEAK TORQUE	2.674 kNm
MAX. SPEED	8000 rpm
MAX. BORE	FLEX HUB 52 mm RIGID HUB 60 mm
INERTIA(WK ²)	0.006 Kgm ²
WEIGHT(Approx.)	4.4 kg

ONLY CPLG HUBS TO BE DYNAMICALLY BALANCED TO Gr. 6.3, ISO-1940-1

MAX. MISALIGNMENTS

AXIAL DEFLECTION	±0.25 mm
ANGULAR DEFLECTION	±2° Deg./Gear mesh

NOTE:-

- * GREASE PLUG ON BOTH SLEEVES WILL BE PROVIDED FOR LUBRICATION.
- * TIGHTENING TORQUE OF THE BOLT(S.NO.-4) - 6 Nm
- * GREASE QTY.- 0.015 Kg (CUSTOMER'S SCOPE)

8	RIGID HUB	C55 BS EN10277-2	1
7	HEX NUT	H.T.S.	6
6	SPRING WASHER	SPRING STEEL	6
5	GASKET	NON ASBESTOS PAPER	1
4	HEX HEAD FIT BOLTS	H.T.S.	6
3	SLEEVE	C55 BS EN10277-2	1
2	'O' RING	NITRILE RUBBER	1
1	FLEX. HUB	C55 BS EN10277-2	1
SR.NO.	DESCRIPTION	MATERIAL	QTY.

REV.	DMRN NO.	DESCRIPTION	REV. BY	APPD. BY	DATE

TITLE: **RGS-10/-COUPLING**

CUSTOMER NAME: _____

AUTHORITY	INITIALS	SIGN	DATE
DRAWN	-	-	-
CHECKED	-	-	-
APPROVED	-	-	-

SCALE: NTS REF. No.: _____

RATHI RATHI TRANSPower PVT LTD PUNE 411014 DRG. No.: _____

This drawing / information / design is the property of Rathi Transpower Pvt. Ltd. It is confidential & must not be made public or copied without prior written authorization & is subjected to recall at any time. Acceptance of this drawing constitutes full agreement with these conditions