

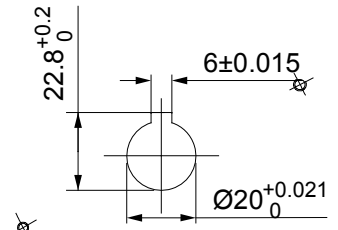
ERP CODE: \_\_\_\_\_

M5 SET SCREW ON KEYWAY.

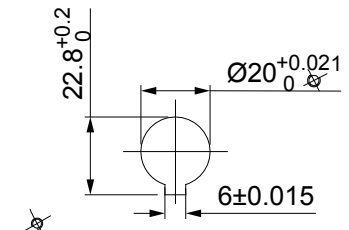
DRIVE SIDE

ALLEN KEY

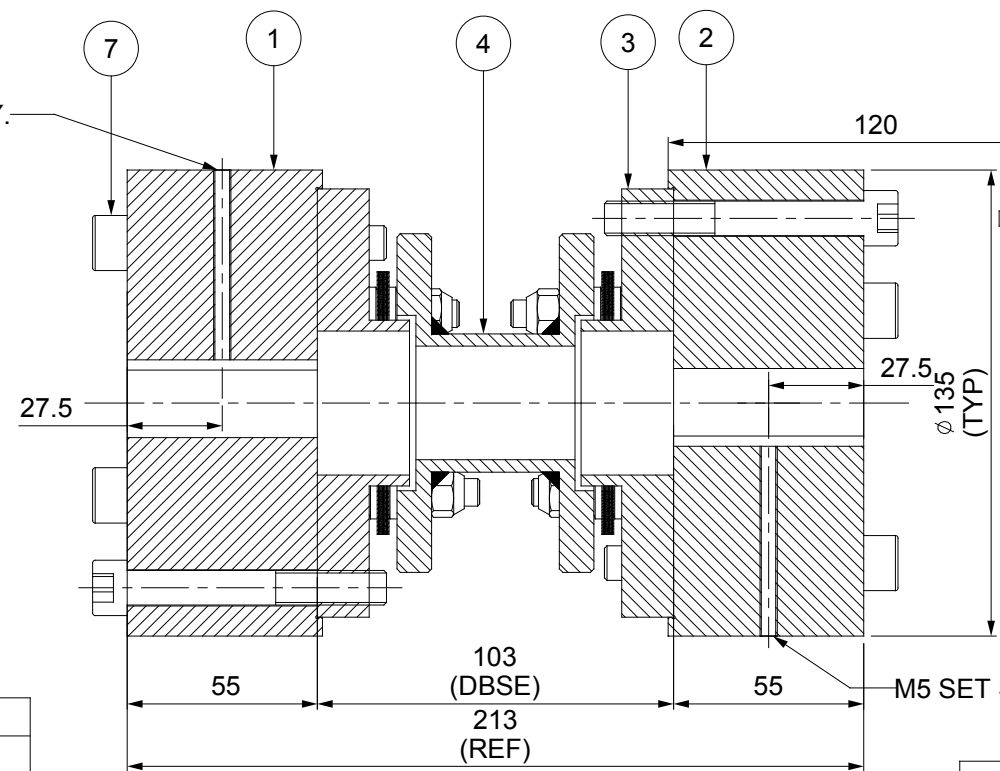
DRIVEN SIDE



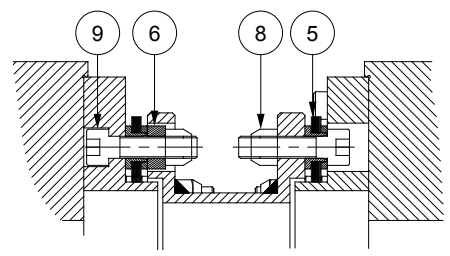
2 NOS.-M10 TAPPED  
PULLER HOLES ON 111.5 PCD



2 NOS.-M10 TAPPED  
PULLER HOLES ON 111.5 PCD



M5 SET SCREW ON KEYWAY.



NOTE:-  
TIGHTENING TORQUE :-  
1) SR.NO.9 COUPLING BOLT = 29 Nm  
2) SR.NO.7 ATTACHMENT BOLT = 29 Nm

APPLICATION DETAILS	
APPLICATION	-
RATED POWER	-
RATED SPEED	-
RATED TORQUE	-
A.S.F.	-
COUPLING SPECIFICATIONS	
COUPLING RATING	6.5 KW @ 100 RPM
RATED TORQUE	618 Nm
MAX. BORE	92 mm
WEIGHT (Approx.)	16.015 kg
INERTIA (WK <sup>2</sup> )	0.035 kg.M <sup>2</sup>
TORSIONAL STIFFNESS	0.100 MNm/rad
CPLG DYNAMIC BALANCING TO GR 6.3 AS PER ISO 1940- 1	
MAX. MISALIGNMENT	
AXIAL DEFLECTION	± 1 mm
ANGULAR DEFLECTION	0.75°
RADIAL MISALIGNMENT	0.013mm

SR.NO.	DESCRIPTION	MATERIAL	QTY.
9	COUPLING BOLT	HTS GR. 12.9	12
8	CLEVELOCK NUT	GR. 10	12
7	ATTACHMENT BOLT	HTS GR. 12.9	12
6	SLEEVE	ASTM A 1040	6
5	ELEMENT BLADE ASSEMBLY	SS 301	2
4	SPACER	ASTM A 1040	1
3	ADAPTER III/IV	ASTM A 1040	2
2	DRIVEN HUB (IV)	ASTM A 1040	1
1	DRIVE HUB (IV)	ASTM A 1040	1

REV	DMRN NO.	DESCRIPTION	REV. BY	APPD. BY	DATE

TITLE: REM-65(103) (IV,IV) /XXXX CPLG

MATERIAL: REFER TABLE

CUSTOMER NAME: \_\_\_\_\_

AUTHORITY	INITIALS	SIGN	DATE
DRAWN	XXX		14.01.19
CHECKED	XXX		14.01.19
APPROVED	XXX		14.01.19

SCALE: 1:1 REF. NO. \_\_\_\_\_

ANG. OF PROJ.

**RATHI** RATHI TRANSPower PVT LTD PUNE-411014 DRG.NO.: R/SD-XXXX/0

This drawing/information/design is the property of Rathi Transpower Pvt. Ltd. It is confidential & must not be disclosed to any third party without prior written authorization & is subjected to recall at any time. Acceptance of this drawing constitutes full arrangements with these conditions.