

ERP CODE: \_\_\_\_\_

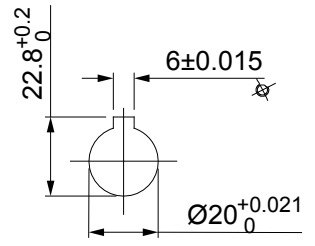
M5 SET SCREW ON KEYWAY.

ALLEN KEY

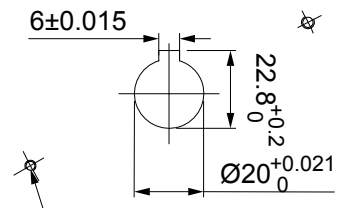
M5 SET SCREW ON KEYWAY.

DRIVEN SIDE

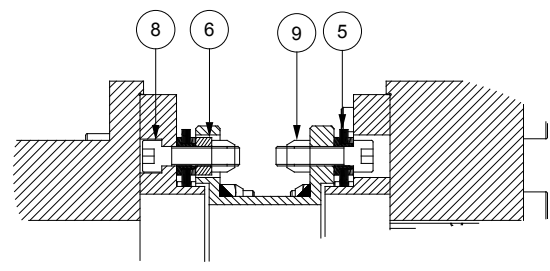
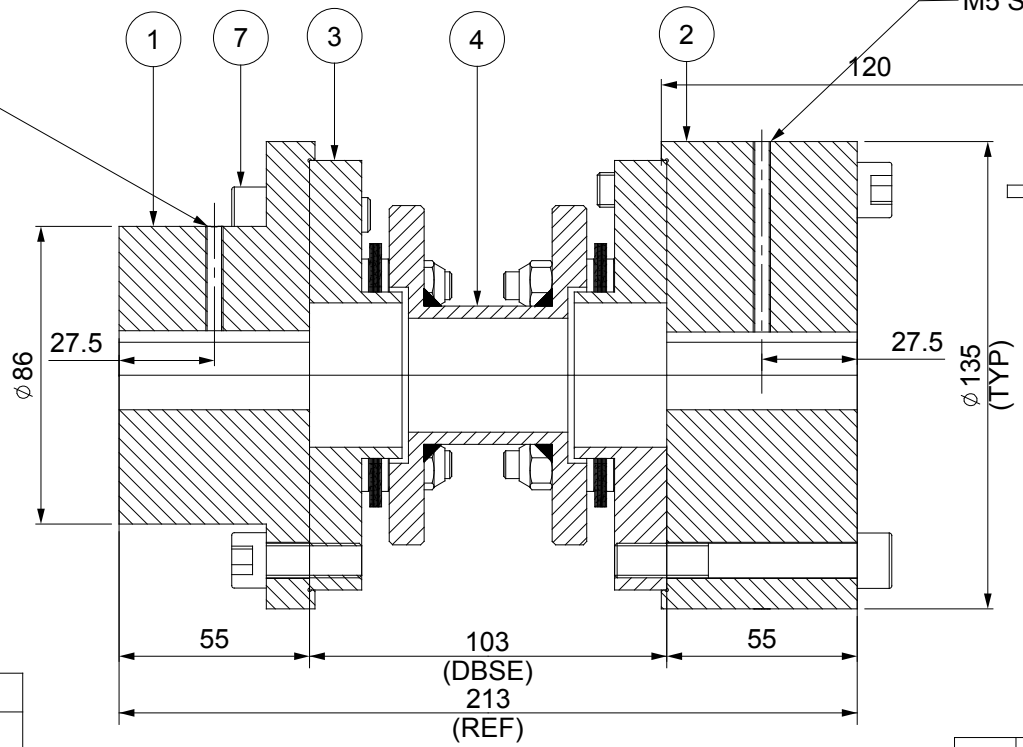
DRIVE SIDE



2 NOS.-M10 TAPPED PULLER HOLES ON 107 PCD



2 NOS.-M10 TAPPED PULLER HOLES ON 111.5 PCD



NOTE:-  
TIGHTENING TORQUE :-  
1) SR.NO.9 COUPLING BOLT = 29Nm  
2) SR.NO.7&8 ATTACHMENT BOLT = 59Nm

APPLICATION DETAILS

APPLICATION	-
RATED POWER	-
RATED SPEED	-
RATED TORQUE	-
A.S.F.	-

COUPLING SPECIFICATIONS

COUPLING RATING	6.5 KW @ 100 RPM
RATED TORQUE	618 Nm
MAX. BORE	HUB (III)-65 mm HUB (IV)-92mm
WEIGHT (Approx.)	13.235 kg
INERTIA (WK <sup>2</sup> )	0.027 kg.M <sup>2</sup>
TORSIONAL STIFFNESS	0.100 MNm/rad

CPLG DYNAMIC BALANCING TO GR 6.3 AS PER ISO 1940- 1

MAX. MISALIGNMENT

AXIAL DEFLECTION	± 1 mm
ANGULAR DEFLECTION	0.75°
RADIAL MISALIGNMENT	0.013mm

9	CLEVELOCK NUT	GR. 10	12
8	COUPLING BOLT	HTS GR. 12.9	12
7	ATTACHMENT BOLT	HTS GR. 12.9	12
6	SLEEVE	ASTM A 1040	6
5	ELEMENT BLADE ASSEMBLY	SS 301	2
4	SPACER	ASTM A 1040/ASTM A106B, ASTM A36	1
3	ADAPTER III/IV	ASTM A 1040	2
2	DRIVE HUB (III)	ASTM A 1040	1
1	DRIVEN HUB (IV)	ASTM A 1040	1
SR.NO.	DESCRIPTION	MATERIAL	QTY.

REV	DMRN NO.	DESCRIPTION	REV. BY	APPD. BY	DATE

TITLE: REM-65(103) III/IV/XXXX CPLG

MATERIAL: REFER TABLE

AUTHORITY: \_\_\_\_\_ INITIALS: \_\_\_\_\_ SIGN: \_\_\_\_\_ DATE: \_\_\_\_\_

CUSTOMER NAME: \_\_\_\_\_

SCALE: NTS REF. NO. \_\_\_\_\_

ANG. OF PROJ.

**RATHI** RATHI TRANSPower PVT LTD PUNE-411014 DRG.NO.: L/REM-XXXX/0

This drawing/ information/ design is the property of Rathi Transpower Pvt. Ltd. It is confidential & must not be made public or copied without prior written authorization & is subjected to recall at any time. Acceptance of this drawing constitutes full arrangements with these conditions.