

ERP CODE: \_\_\_\_\_

8

7

6

5

4

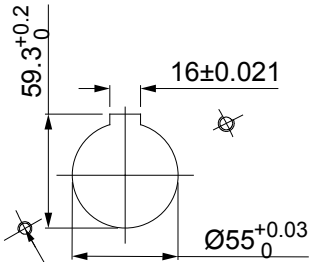
3

2

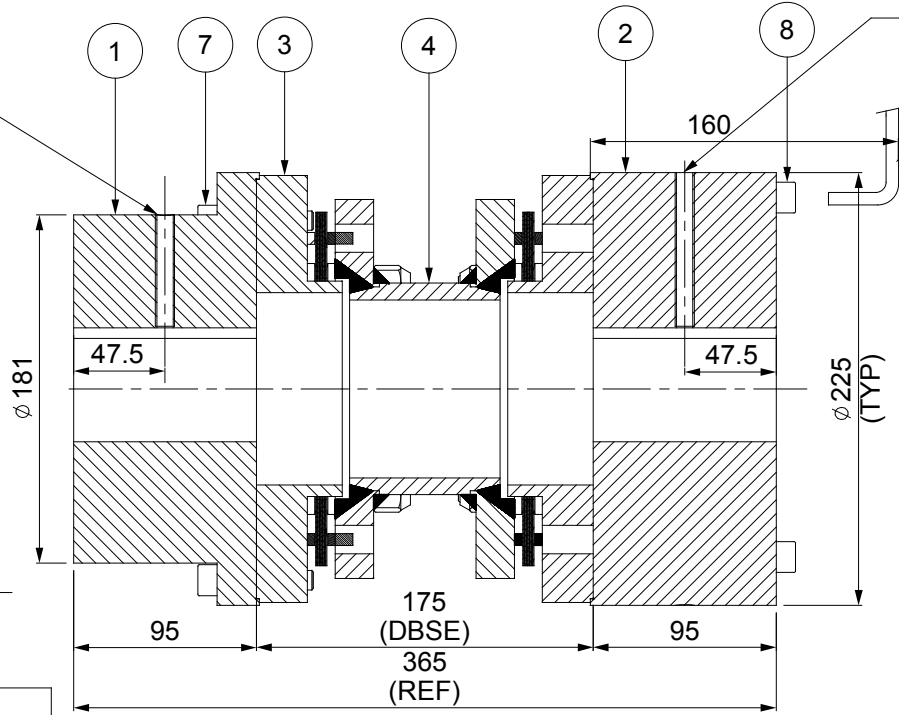
1

M10 SET SCREW ON KEYWAY.

DRIVEN SIDE



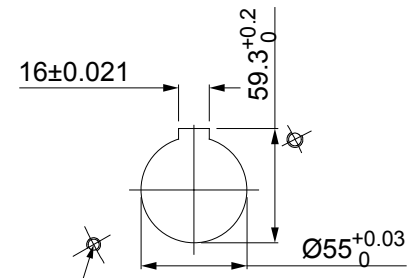
2 NOS.-M10 TAPPED PULLER HOLES ON 154 PCD



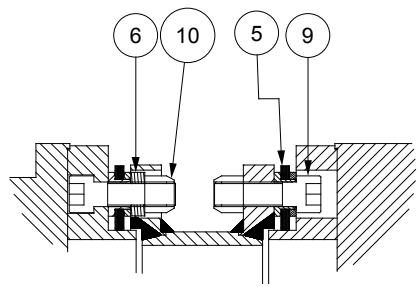
M10 SET SCREW ON KEYWAY.

ALLEN KEY

DRIVE SIDE



2 NOS.-M10 TAPPED PULLER HOLES ON 190 PCD



NOTE:-  
TIGHTENING TORQUE :-  
1) SR.NO.9 COUPLING BOLT = 250Nm  
2) SR.NO.7 & 8 ATTACHMENT BOLT = 59Nm

APPLICATION DETAILS	
APPLICATION	-
RATED POWER	-
RATED SPEED	-
RATED TORQUE	-
A.S.F.	-
COUPLING SPECIFICATIONS	
COUPLING RATING	58.5 KW @ 100 RPM
RATED TORQUE	5583 Nm
MAX. BORE	HUB(III)-127mm HUB(IV)-155mm
WEIGHT (Approx.)	69.720 kg
INERTIA (WK <sup>2</sup> )	0.437 kg.M <sup>2</sup>
TORSIONAL STIFFNESS	1.239 MNm/rad
CPLG DYNAMIC BALANCED TO GR.6.3 AS PER ISO 1940- 1	
MAX. MISALIGNMENT	
AXIAL DEFLECTION	± 2 mm
ANGULAR DEFLECTION	0.75°
RADIAL MISALIGNMENT	0.013 mm

SR.NO.	DESCRIPTION	MATERIAL	QTY.
10	CLEVELOCK NUT	GR. 10	12
9	COUPLING BOLT	AH BOLT GR. 12.9	12
8	ATTACHMENT_BOLT (IV)	AH BOLT GR. 12.9	6
7	ATTACHMENT BOLT (III)	AH BOLT GR. 12.9	6
6	SLEEVE	ASTM A 1040	6
5	ELEMENT BLADE ASSEMBLY	SS 301	2
4	SPACER	ASTM A-106B , ASTM A-36	1
3	ADAPTER III/IV	ASTM A 1040	2
2	DRIVE HUB (IV)	ASTM A 1040	1
1	DRIVEN HUB (III)	ASTM A 1040	1

TITLE: REM-390(175)III/IV /XXXX CPLG	MATERIAL: REFER TABLE	AUTHORITY	INITIALS	SIGN	DATE
CUSTOMER NAME:		DRAWN	-	-	-
		CHECKED	-	-	-
		APPROVED	-	-	-
SCALE: NTS		REF. NO.			
ANG. OF PROJ.					
<b>RATHI</b>		<b>RATHI TRANSPOWER PVT LTD</b>			DRG.NO.:
		<b>PUNE-411014</b>			L/REM-XXXX/0

REV	DMRN NO.	DESCRIPTION	REV. BY	APPD. BY	DATE

This drawing/information/design is the property of Rathi Transpower Pvt. Ltd. It is confidential & must not be made public or copied without prior written authorization & is subjected to recall at any time. Acceptance of this drawing constitutes full arrangements with these conditions.