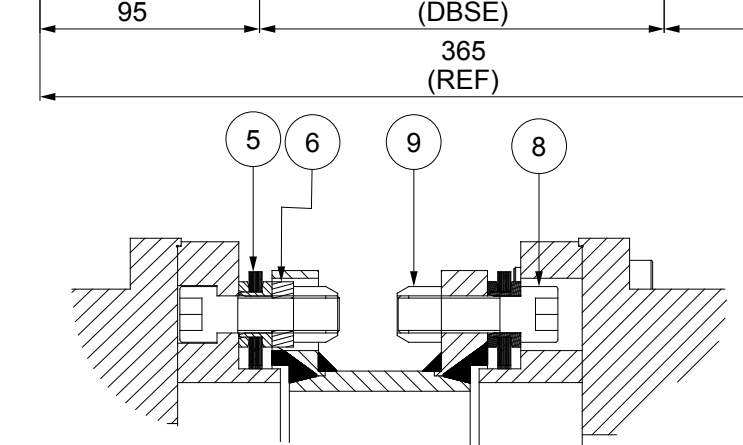


APPLICATION DETAILS	
APPLICATION	-
RATED POWER	-
RATED SPEED	-
RATED TORQUE	-
A.S.F.	-
COUPLING SPECIFICATIONS	
COUPLING RATING	58.5 KW @ 100 RPM
RATED TORQUE	5583 Nm
MAX. BORE	127 mm
WEIGHT (Approx.)	62.212 kg
INERTIA (WK ²)	0.353 kg.M ²
TORSIONAL STIFFNESS	1.239 MNm/rad
CPLG DYNAMIC BALANCED TO GR 6.3 AS PER ISO 1940-1	
MAX. MISALIGNMENT	
AXIAL DEFLECTION	± 2 mm
ANGULAR DEFLECTION	0.75°
RADIAL MISALIGNMENT	0.013 mm



TIGHTENING TORQUE :-
 1) SR.NO.8 COUPLING BOLT = 250 Nm
 2) SR.NO.7 ATTACHMENT BOLT = 59 Nm

REV	DMRN NO.	DESCRIPTION	REV. BY	APPD. BY	DATE

SR.NO.	DESCRIPTION	MATERIAL	QTY.
9	CLEVELOCK NUT	GR. 10	10
8	COUPLING BOLT	AH BOLT GR. 12.9	10
7	ATTACHMENT BOLT (III)	AH BOLT GR. 12.9	12
6	SLEEVE	ASTM A 1040	6
5	ELEMENT BLADE ASSEMBLY	SS 301	2
4	SPACER	ASTM A 1040 / ASTM A 36, ASTM A106B	1
3	ADAPTER III/IV	ASTM A 1040	2
2	DRIVEN HUB (III)	ASTM A 1040	1
1	DRIVE HUB (III)	ASTM A 1040	1

TITLE: REM-390(175) III/III /XXXX CPLG
 MATERIAL: REFER TABLE
 CUSTOMER NAME: _____
 SCALE: 1:10
 REF. NO. _____
 DRG.NO.: XXXX
RATHI RATHI TRANSPower PVT LTD PUNE-411014

This drawing/information/design is the property of Rath Transpower Pvt. Ltd. It is confidential & must be kept confidential. No part of this drawing may be reproduced, stored in a retrieval system, or transmitted in any form or by any means, electronic, mechanical, photocopying, recording, or by any information storage and retrieval system, without the prior written authorization & is subjected to recall at any time. Acceptance of this drawing constitutes full agreement with these conditions.