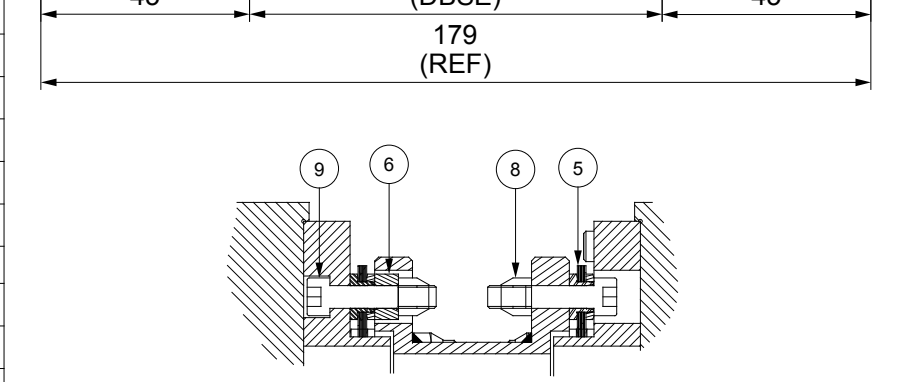


APPLICATION DETAILS	
APPLICATION	-
RATED POWER	-
RATED SPEED	-
RATED TORQUE	-
A.S.F.	-
COUPLING SPECIFICATIONS	
COUPLING RATING	2.40 KW @ 100 RPM
RATED TORQUE	232 Nm
MAX. BORE	72 mm
WEIGHT (Approx.)	8.467 kg
INERTIA (WK <sup>2</sup> )	0.012 kg.M <sup>2</sup>
TORSIONAL STIFFNESS	0.043 MNm/rad
CPLG DYNAMIC BALANCING TO GR 6.3 AS PER ISO 1940- 1	
MAX. MISALIGNMENT	
AXIAL DEFLECTION	± 1 mm
ANGULAR DEFLECTION	0.75°
RADIAL MISALIGNMENT	0.013mm



**NOTE:-**  
**TIGHTENING TORQUE :-**  
 1) SR.NO.9 COUPLING BOLT = 12.1 Nm  
 2) SR.NO.7 ATTACHMENT BOLT = 29 Nm

REV	DMRN NO.	DESCRIPTION	REV. BY	APPD. BY	DATE

SR.NO.	DESCRIPTION	MATERIAL	QTY.
9	COUPLING BOLT	AH BOLT GR. 12.9	12
8	CLEVELOCK NUT	GR. 10	12
7	ATTACHMENT BOLT(IV)	AH BOLT GR. 12.9	12
6	SLEEVE	ASTM A 1040	6
5	ELEMENT BLADE ASSEMBLY	SS 301	2
4	SPACER	ASTM A 1040	1
3	ADAPTER III/IV	ASTM A 1040	2
2	DRIVEN HUB (IV)	ASTM A 1040	1
1	DRIVE HUB (IV)	ASTM A 1040	1

TITLE: REM-25(89) (IV/IV) /XXXX CPLG		MATERIAL: REFER TABLE		AUTHORITY	INITIALS	SIGN	DATE
CUSTOMER NAME:				DRAWN	XXX		14.01.19
				CHECKED	XXX		14.01.19
				APPROVED	XXX		14.01.19
SCALE: 1:1				ANG. OF PROJ.		REF. NO.	
<b>RATHI TRANSPOWER PVT LTD</b> PUNE-411014				DRG.NO.:		R/SD-XXXX/0	
				3 EN-F-112-Rev1			