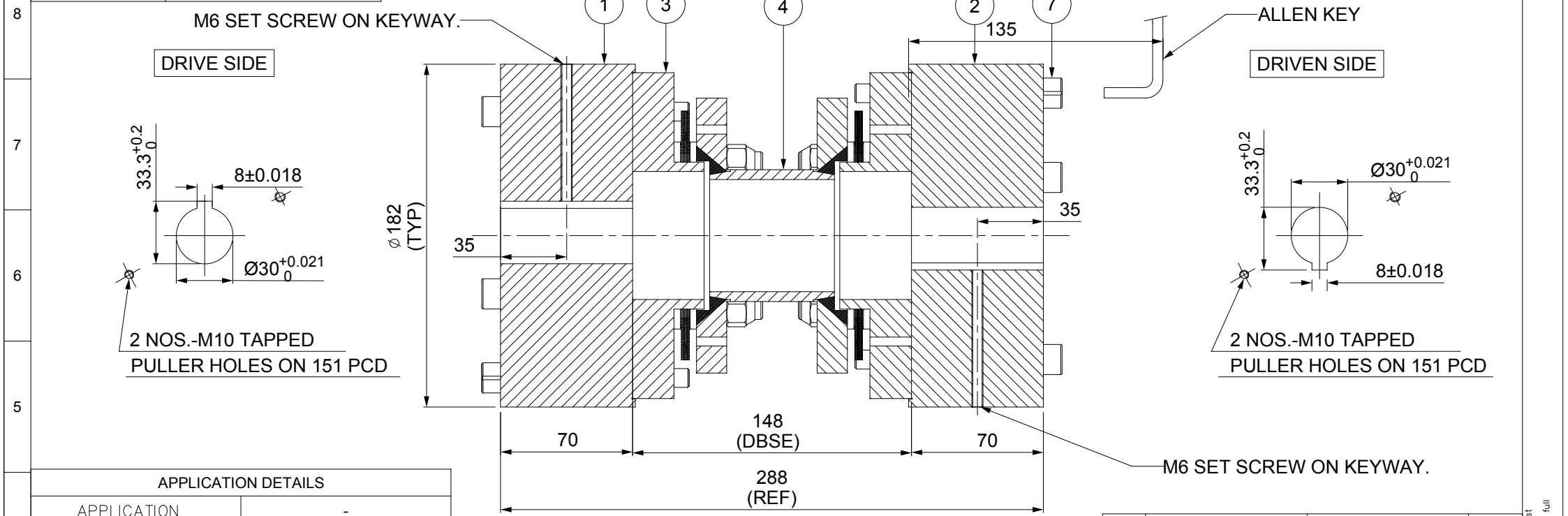
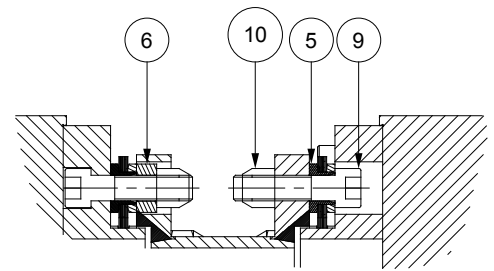


ERP CODE: _____



APPLICATION DETAILS	
APPLICATION	-
RATED POWER	-
RATED SPEED	-
RATED TORQUE	-
A.S.F.	-
COUPLING SPECIFICATIONS	
COUPLING RATING	20.0 KW @ 100 RPM
RATED TORQUE	1912 Nm
MAX. BORE	120 mm
WEIGHT (Approx.)	39.327 kg
INERTIA (WK^2)	0.162 kg.M ²
TORSIONAL STIFFNESS	0.395 MNm/rad
CPLG DYNAMIC BALANCING TO GR 6.3 AS PER ISO 1940- 1	
MAX. MISALIGNMENT	
AXIAL DEFLECTION	± 1 mm
ANGULAR DEFLECTION	0.75°
RADIAL MISALIGNMENT	0.013mm



NOTE:-
TIGHTENING TORQUE :-
1) SR.NO.9 COUPLING BOLT = 102 Nm
2) SR.NO.7 ATTACHMENT BOLT = 59 Nm

REV	DMRN NO.	DESCRIPTION	REV. BY	APPD. BY	DATE

SR.NO.	DESCRIPTION	MATERIAL	QTY.
10	CLEVELOCK NUT	GR. 10	12
9	COUPLING BOLT	AH BOLT GR. 12.9	12
7	ATTACHMENT BOLT(IV)	AH BOLT GR. 12.9	12
6	SLEEVE	ASTM A 1040	6
5	ELEMENT BLADE ASSEMBLY	SS 301	2
4	SPACER	ASTM A-106B , ASTM A-36	1
3	ADAPTER III/IV	ASTM A 1040	2
2	DRIVEN HUB (IV)	ASTM A 1040	1
1	DRIVE HUB (IV)	ASTM A 1040	1

TITLE: REM-165(148) (IV/IV)/XXXXCPLG	MATERIAL: REFER TABLE	AUTHORITY	INITIALS	SIGN	DATE
CUSTOMER NAME:	DRAWN	XXX			14.01.19
	CHECKED	XXX			14.01.19
	APPROVED	XXX			14.01.19
SCALE: 1:1		REF. NO.			
ANG. OF PROJ.					
					DRG.NO.:
RATHI TRANSPower PVT LTD PUNE-411014					R/SD-XXXX/0

This drawing/information/design is the property of Rathi Transpower Pvt. Ltd. It is confidential & must not be made public or copied without prior written authorization & is subjected to recall at any time. Acceptance of this drawing constitutes full arrangements with these conditions.