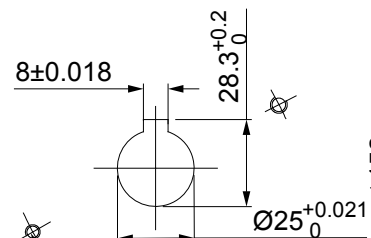


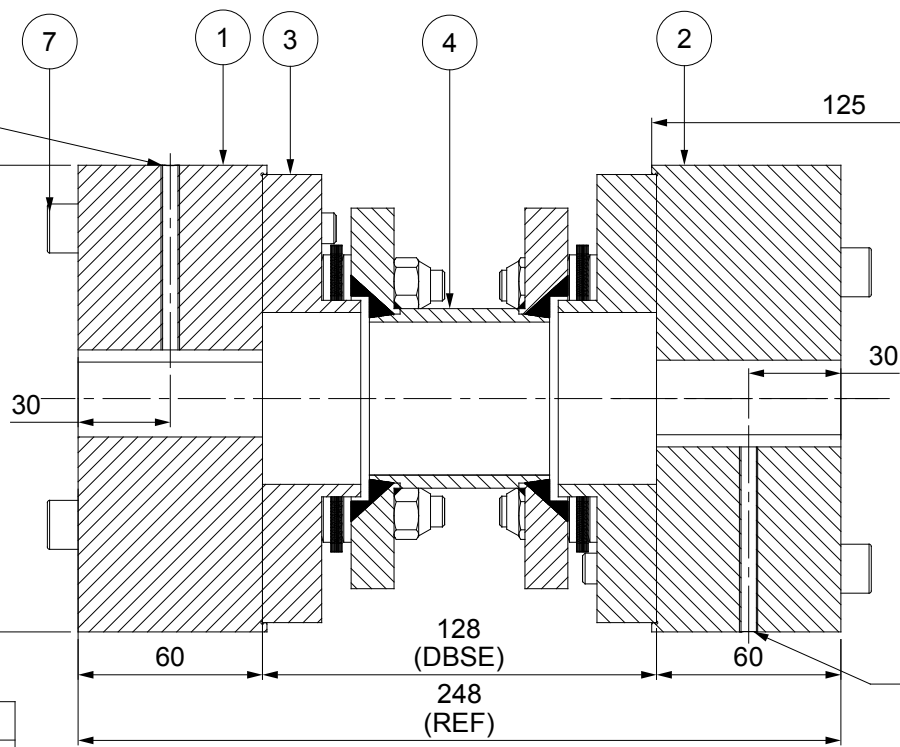
ERP CODE: \_\_\_\_\_

M6 SET SCREW ON KEYWAY.

DRIVE SIDE

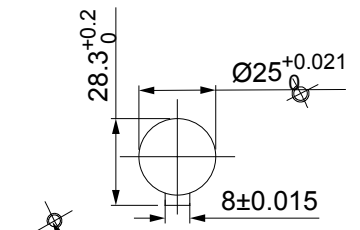


2 NOS.-M10 TAPPED  
PULLER HOLES ON 128.5 PCD



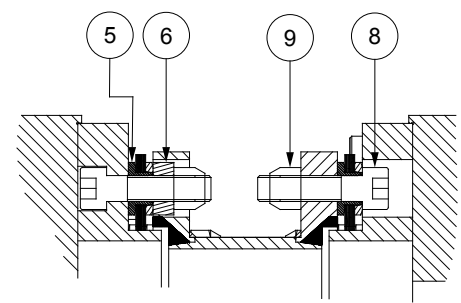
ALLEN KEY

DRIVEN SIDE



2 NOS.-M10 TAPPED  
PULLER HOLES ON 128.5 PCD

M6 SET SCREW ON KEYWAY.



NOTE:-  
TIGHTENING TORQUE :-  
1) SR.NO.8 COUPLING BOLT = 59 Nm  
2) SR.NO.7 ATTACHMENT BOLT = 59 Nm

APPLICATION DETAILS	
APPLICATION	-
RATED POWER	-
RATED SPEED	-
RATED TORQUE	-
A.S.F.	-
COUPLING SPECIFICATIONS	
COUPLING RATING	12.6 KW @ 100 RPM
RATED TORQUE	1204 Nm
MAX. BORE	102 mm
WEIGHT (Approx.)	23.695 kg
INERTIA (WK <sup>2</sup> )	0.068 kg.M <sup>2</sup>
TORSIONAL STIFFNESS	0.232 MNm/rad
CPLG DYNAMIC BALANCING TO GR 6.3 AS PER ISO 1940- 1	
MAX. MISALIGNMENT	
AXIAL DEFLECTION	± 1 mm
ANGULAR DEFLECTION	0.75°
RADIAL MISALIGNMENT	0.013mm

SR.NO.	DESCRIPTION	MATERIAL	QTY.
9	CLEVELOCK NUT	HTS GR. 10	12
8	COUPLING BOLT	HTS GR. 12.9	12
7	ATTACHMENT BOLT (IV)	HTS GR. 12.9	12
6	SLEEVE	ASTM A 1040	6
5	ELEMENT BLADE ASSEMBLY	SS 301	2
4	SPACER	ASTM A-106B , ASTM A-36	1
3	ADAPTER III/IV	ASTM A 1040	2
2	DRIVEN HUB (IV)	ASTM A 1040	1
1	DRIVE HUB (IV)	ASTM A 1040	1

REV	DMRN NO.	DESCRIPTION	REV. BY	APPD. BY	DATE

TITLE: REM-125(128) (IV/IV) /XXXX CPLG	MATERIAL: REFER TABLE	AUTHORITY DRAWN CHECKED APPROVED	INITIALS XXX XXX XXX	SIGN	DATE 14.01.19 14.01.19 14.01.19
CUSTOMER NAME:		SCALE: 1:1		REF. NO.	
RATHI		RATHI TRANSPOWER PVT LTD PUNE-411014		DRG.NO.: R/SD-XXXX/0	

This drawing/information/design is the property of Rathi Transpower Pvt. Ltd. It is confidential & must not be made public or copied without prior written authorization & is subjected to recall at any time. Acceptance of this drawing constitutes full arrangements with these conditions.