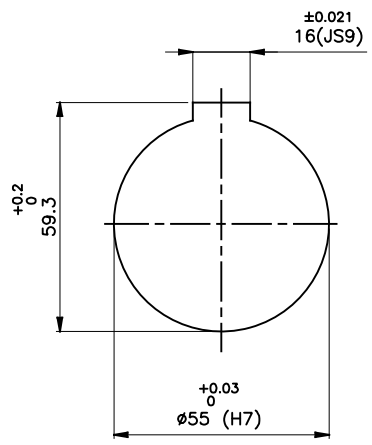
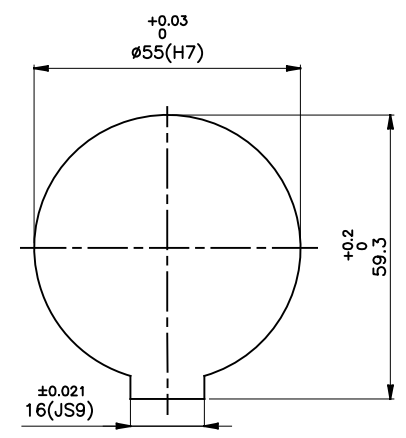
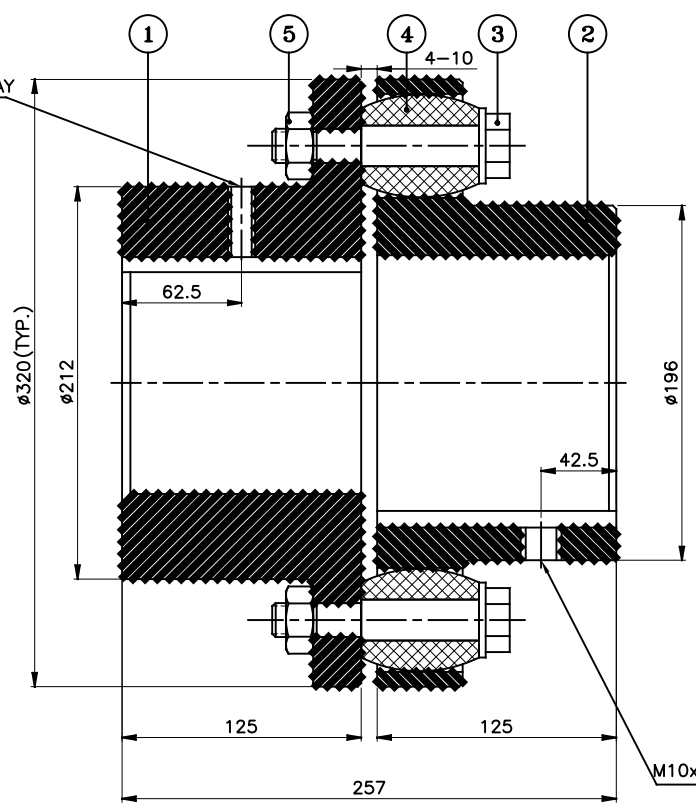


J I H G F E D C B A



DRIVE END



DRIVEN END

M10x1.5P SET SCREW ON KEYWAY

APPLICATION DETAILS

APPLICATION	-
RATED POWER	-
RATED SPEED	-
RATED TORQUE	-
A.S.F.	-

COUPLING SPECIFICATIONS

COUPLING RATING	64 kW @ 100 RPM
RATED TORQUE	6.1 kNm.
PEAK TORQUE	12.2 kNm.
MAX. SPEED	2100 rpm.
MAX. BORE	PIN HALF 135 mm BUSH HALF 125 mm
WEIGHT (Approx.)	72.42 kg
INERTIA (WK ²)	0.75 kgm ²

COUPLING HUBS DYNAMICALLY BALANCED TO GR. 6.3 AS PER ISO: 1940-1.

MAX. MISALIGNMENTS

AXIAL DEFLECTION	±3 mm.
ANGULAR DEFLECTION	1°
RADIAL DEFLECTION	0.7 mm

5	NYLOCK NUT	NYLOCK NUT GR. 8	12
4	BUSH	NATURAL RUBBER	12
3	PIN	EN-8D/15B25	12
2	BUSH HALF	CI IS-210 Gr.FG-260	1
1	PIN HALF	CI IS-210 Gr.FG-260	1
SR NO	DESCRIPTION	MATERIAL	QTY

REV.	DMRN NO.	DESCRIPTION	REV. BY	APPD. BY	DATE

TITLE: **RB-320-12 /----- CPLG.** MATERIAL: REFER TABLE

CUSTOMER NAME: _____

AUTHORITY	INITIALS	SIGN	DATE
DRAWN	-	-	-
CHECKED	-	-	-
APPROVED	-	-	-

SCALE: NTS REF. No.: _____

RATHI RATHI TRANSPOWER PVT LTD PUNE 411014 DRG. No.: _____

This drawing / information / design is the property of Rathi Transpower Pvt. Ltd. It is confidential & must not be made public or copied without prior written authorization & is subjected to recall at any time. Acceptance of this drawing constitutes full agreement with these conditions