

J I H G F E D C B A

8

7

6

5

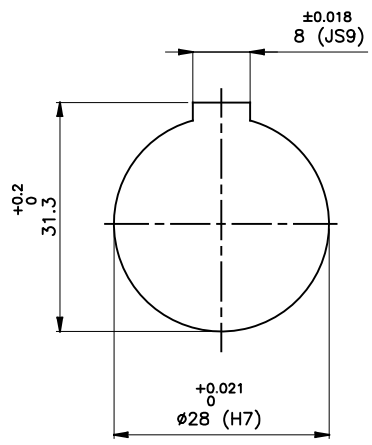
4

3

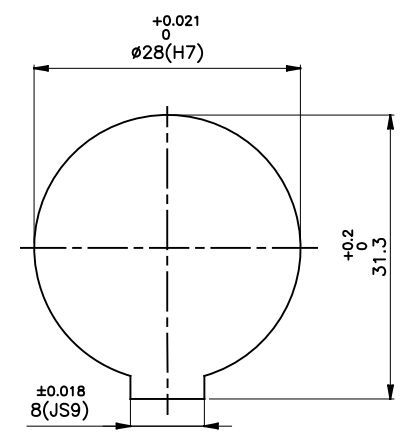
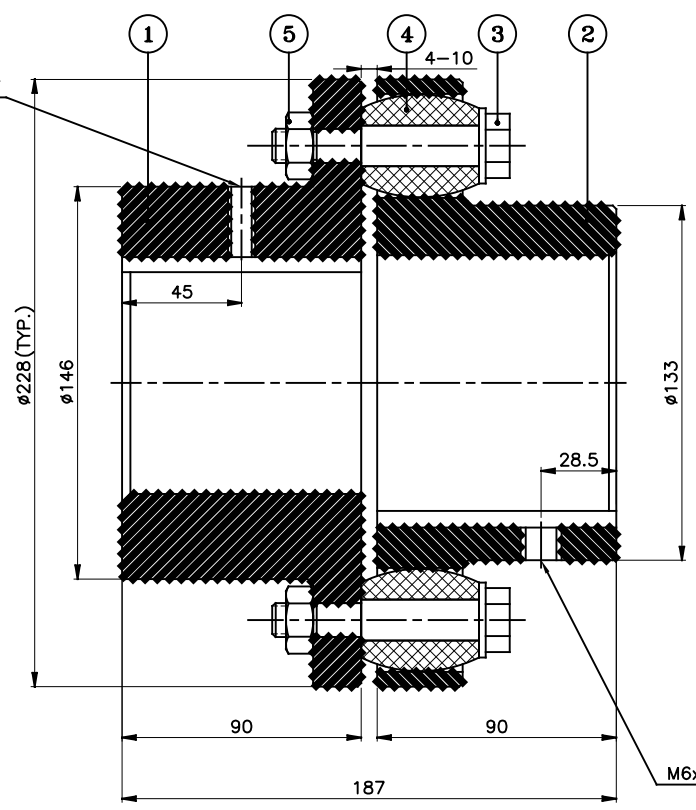
2

1

24



DRIVE END



DRIVEN END

APPLICATION DETAILS		
APPLICATION	-	
RATED POWER	-	
RATED SPEED	-	
RATED TORQUE	-	
A.S.F.	-	
COUPLING SPECIFICATIONS		
COUPLING RATING	21 kW @ 100 RPM	
RATED TORQUE	2.0 kNm.	
PEAK TORQUE	4.0 kNm.	
MAX. SPEED	3000 rpm.	
MAX. BORE	PIN HALF	100 mm
	BUSH HALF	90 mm
WEIGHT(Approx.)	27.17 Kg	
INERTIA (WK ²)	0.15 Kgm ²	
COUPLING HUBS DYNAMICALLY BALANCED TO GR. 6.3 AS PER ISO: 1940-1.		
MAX. MISALIGNMENTS		
AXIAL DEFLECTION	± 3 mm.	
ANGULAR DEFLECTION	1'	
RADIAL DEFLECTION	0.6 mm	

SR NO	DESCRIPTION	MATERIAL	QTY
5	NYLOCK NUT	NYLOCK NUT GR. 8	11
4	BUSH	STAINLESS STEEL	11
3	PIN	EN-8D/15B25	11
2	BUSH HALF	CI IS-210 Gr.FG-260	1
1	PIN HALF	CI IS-210 Gr.FG-260	1

REV.	DMRN NO.	DESCRIPTION	REV. BY	APPD. BY	DATE

TITLE: **RB-228-11 ---- CPLG.** MATERIAL: REFER TABLE

CUSTOMER NAME: _____

AUTHORITY	INITIALS	SIGN	DATE
DRAWN	-	-	-
CHECKED	-	-	-
APPROVED	-	-	-

SCALE: NTS REF. No.: _____

RATHI RATHI TRANSPower PVT LTD PUNE 411014 DRG. No.: _____

This drawing / information / design is the property of Rathi Transpower Pvt. Ltd. It is confidential & must not be made public or copied without prior written authorization & is subjected to recall at any time. Acceptance of this drawing constitutes full agreement with these conditions