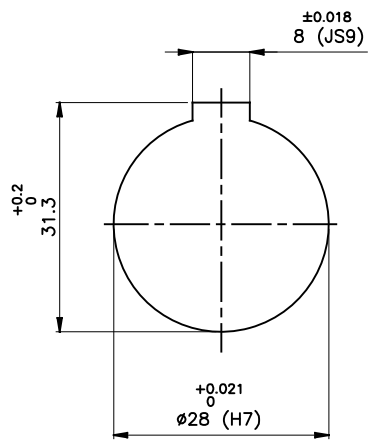
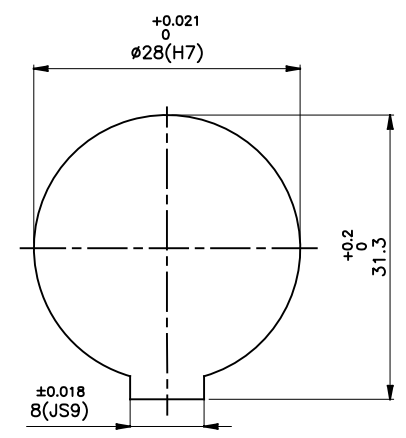
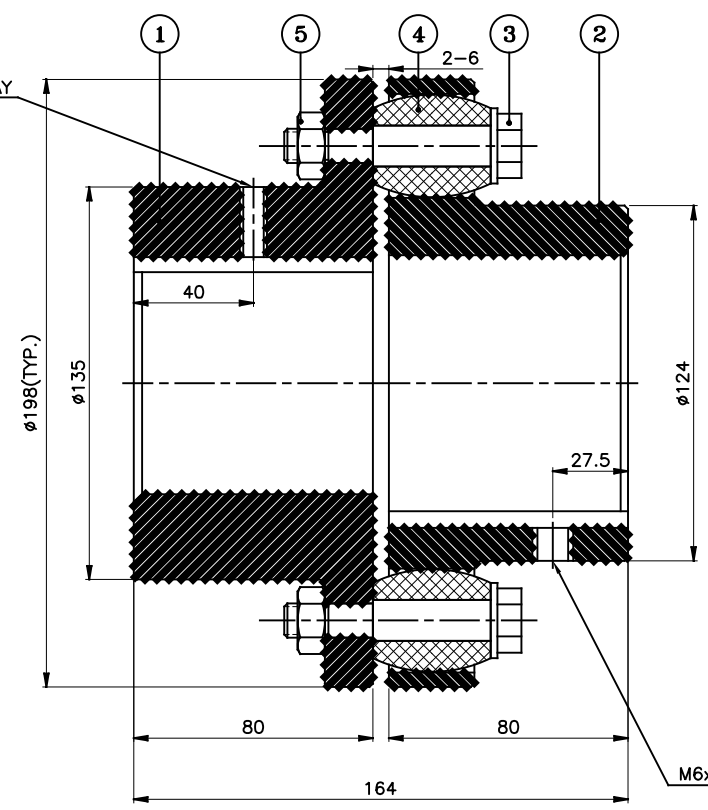


J I H G F E D C B A



DRIVE END



DRIVEN END

| APPLICATION DETAILS | | | |
|---|-------------------------------------|-------|--|
| APPLICATION | - | | |
| RATED POWER | - | | |
| RATED SPEED | - | | |
| RATED TORQUE | - | | |
| A.S.F. | - | | |
| COUPLING SPECIFICATIONS | | | |
| COUPLING RATING | 19.5 kW @ 100 RPM | | |
| RATED TORQUE | 1.86 kNm. | | |
| PEAK TORQUE | 3.72 kNm. | | |
| MAX. SPEED | 3400 rpm. | | |
| MAX. BORE | PIN HALF | 90 mm | |
| | BUSH HALF | 80 mm | |
| WEIGHT(Approx.) | 19.3 Kg | | |
| INERTIA (WK ²) | 0.0924 Kg ^m ² | | |
| COUPLING HUBS DYNAMICALLY BALANCED TO GR. 6.3 AS PER ISO: 1940-1. | | | |
| MAX. MISALIGNMENTS | | | |
| AXIAL DEFLECTION | ± 2 mm. | | |
| ANGULAR DEFLECTION | 1° | | |
| RADIAL DEFLECTION | 0.5 mm | | |

| SR NO | DESCRIPTION | MATERIAL | QTY |
|-------|-------------|---------------------|-----|
| 5 | NYLOCK NUT | NYLOCK NUT GR. 8 | 10 |
| 4 | BUSH | POLYURETHANE | 10 |
| 3 | PIN | EN-8D/15B25 | 10 |
| 2 | BUSH HALF | CI IS-210 Gr.FG-260 | 1 |
| 1 | PIN HALF | CI IS-210 Gr.FG-260 | 1 |

| REV. | DMRN NO. | DESCRIPTION | REV. BY | APPD. BY | DATE |
|------|----------|-------------|---------|----------|------|
| | | | | | |
| | | | | | |
| | | | | | |
| | | | | | |

TITLE: **RB-198-10 /----- CPLG.**

MATERIAL: REFER TABLE

CUSTOMER NAME:

SCALE: NTS REF. No.: -

RATHI RATHI TRANSPower PVT LTD PUNE 411014

DRG. No.: -

This drawing / information / design is the property of Rathi Transpower Pvt. Ltd. It is confidential & must not be made public or copied without prior written authorization & is subjected to recall at any time. Acceptance of this drawing constitutes full agreement with these conditions