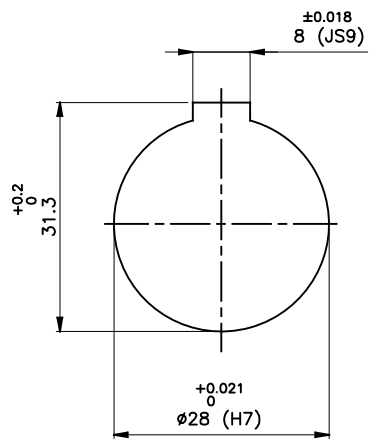
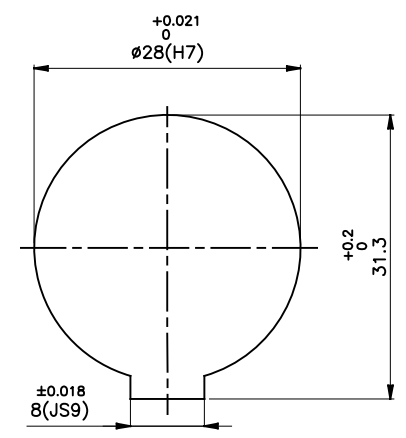
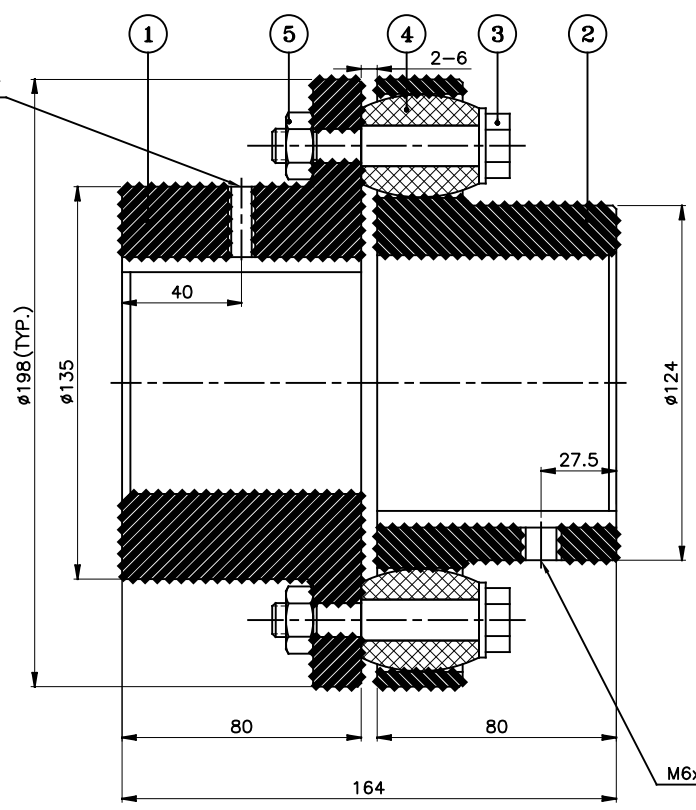


J I H G F E D C B A



**DRIVE END**



**DRIVEN END**

**APPLICATION DETAILS**

APPLICATION	-
RATED POWER	-
RATED SPEED	-
RATED TORQUE	-
A.S.F.	-

**COUPLING SPECIFICATIONS**

COUPLING RATING	33 kW @ 100 RPM
RATED TORQUE	3.15 kNm.
PEAK TORQUE	6.30 kNm.
MAX. SPEED	3400 rpm.
MAX. BORE	PIN HALF 90 mm BUSH HALF 80 mm
WEIGHT(Approx.)	19.3 Kg
INERTIA (WK <sup>2</sup> )	0.0924 Kgm <sup>2</sup>

COUPLING HUBS DYNAMICALLY BALANCED TO GR. 6.3 AS PER ISO: 1940-1.

**MAX. MISALIGNMENTS**

AXIAL DEFLECTION	± 2 mm.
ANGULAR DEFLECTION	1°
RADIAL DEFLECTION	0.5 mm

5	NYLOCK NUT	NYLOCK NUT GR. 8	10
4	BUSH	H TRANS	10
3	PIN	EN-8D/15B25	10
2	BUSH HALF	CI IS-210 Gr.FG-260	1
1	PIN HALF	CI IS-210 Gr.FG-260	1
SR NO	DESCRIPTION	MATERIAL	QTY

REV.	DMRN NO.	DESCRIPTION	REV. BY	APPD. BY	DATE

TITLE: **RB-198-10 /----- CPLG.** MATERIAL: REFER TABLE

CUSTOMER NAME: \_\_\_\_\_

AUTHORITY	INITIALS	SIGN	DATE
DRAWN	-	-	-
CHECKED	-	-	-
APPROVED	-	-	-

SCALE: NTS REF. No.: \_\_\_\_\_

**RAHI** RATHI TRANSPower PVT LTD PUNE 411014 DRG. No.: \_\_\_\_\_

This drawing / information / design is the property of Rathi Transpower Pvt. Ltd. It is confidential & must not be made public or copied without prior written authorization & is subjected to recall at any time. Acceptance of this drawing constitutes full agreement with these conditions