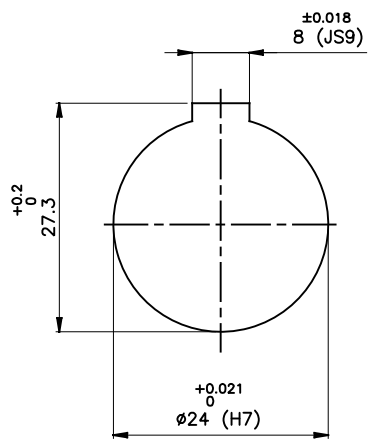
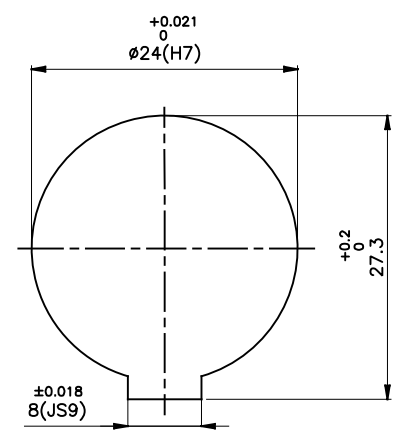
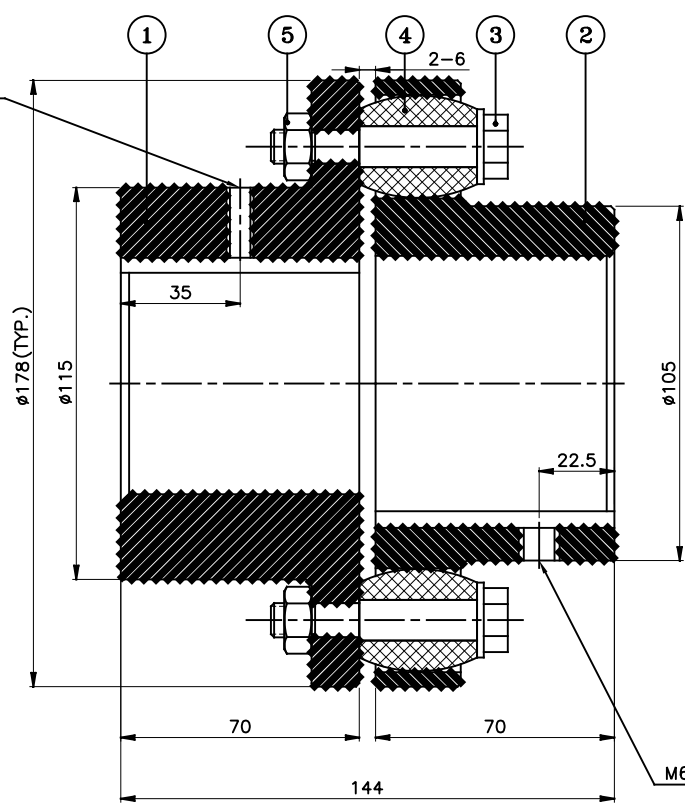


J I H G F E D C B A



**DRIVE END**



**DRIVEN END**


APPLICATION DETAILS	
APPLICATION	-
RATED POWER	-
RATED SPEED	-
RATED TORQUE	-
A.S.F.	-

COUPLING SPECIFICATIONS	
COUPLING RATING	6.7 kW @ 100 RPM
RATED TORQUE	0.63 kNm.
PEAK TORQUE	1.27 kNm.
MAX. SPEED	3800 rpm.
MAX. BORE	PIN HALF 75 mm
	BUSH HALF 70 mm
WEIGHT(Approx.)	14.05 Kg
INERTIA (WK <sup>2</sup> )	0.056 Kgm <sup>2</sup>

MAX. MISALIGNMENTS	
AXIAL DEFLECTION	± 2 mm.
ANGULAR DEFLECTION	1°
RADIAL DEFLECTION	0.5 mm

REV.	DMRN NO.	DESCRIPTION	REV. BY	APPD. BY	DATE

SR NO	DESCRIPTION	MATERIAL	QTY
5	NYLOCK NUT	NYLOCK NUT GR. 8	6
4	BUSH	<del>NYLOCK NUT</del>	6
3	PIN	EN-8D/15B25	6
2	BUSH HALF	CI IS-210 Gr.FG-260	1
1	PIN HALF	CI IS-210 Gr.FG-260	1

TITLE: <b>RB-178-6 /----- CPLG.</b>		MATERIAL: REFER TABLE	AUTHORITY	INITIALS	SIGN	DATE
CUSTOMER NAME:		APPROVED	-	-	-	-
SCALE: NTS		REF. No.:	-			
		<b>RATHI TRANSPOWER PVT LTD</b> PUNE 411014		DRG. No.:		

This drawing / information / design is the property of Rathi Transpower Pvt. Ltd. It is confidential & must not be made public or copied without prior written authorization & is subjected to recall at any time. Acceptance of this drawing constitutes full agreement with these conditions