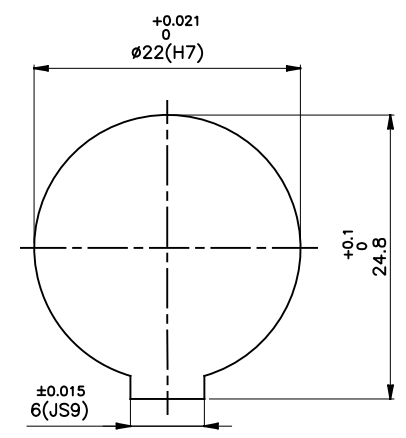
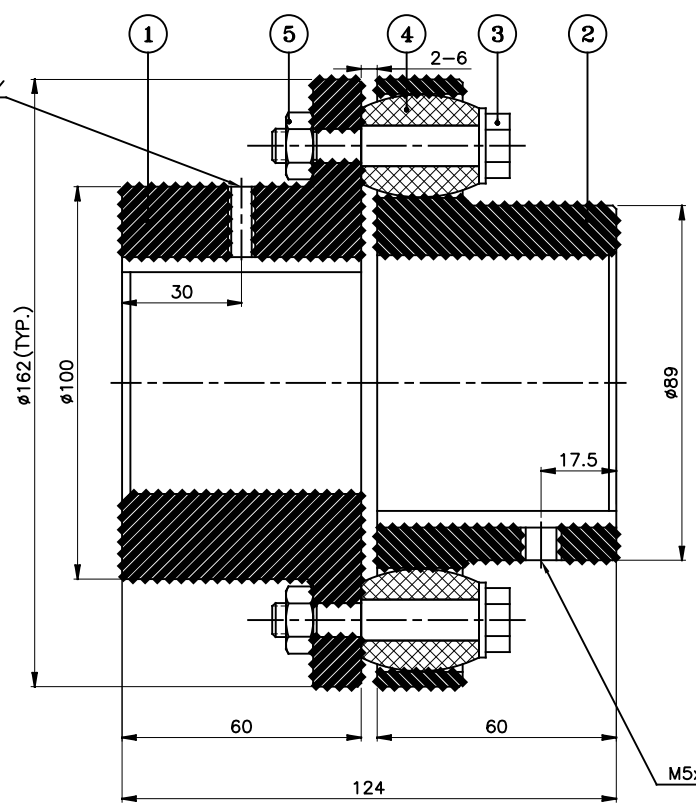


**DRIVE END**



**DRIVEN END**

**APPLICATION DETAILS**

APPLICATION	-
RATED POWER	-
RATED SPEED	-
RATED TORQUE	-
A.S.F.	-

**COUPLING SPECIFICATIONS**

COUPLING RATING	14 kW @ 100 RPM
RATED TORQUE	1.33 kNm.
PEAK TORQUE	2.6 kNm.
MAX. SPEED	4500 rpm.
MAX. BORE	PIN HALF 65 mm BUSH HALF 60 mm
WEIGHT (Approx.)	10.22 Kg
INERTIA (WK <sup>2</sup> )	0.0409 Kg m <sup>2</sup>

COUPLING HUBS DYNAMICALLY BALANCED TO GR. 6.3 AS PER ISO: 1940-1.

**MAX. MISALIGNMENTS**

AXIAL DEFLECTION	± 2 mm.
ANGULAR DEFLECTION	1°
RADIAL DEFLECTION	0.4 mm

5	NYLOCK NUT	NYLOCK NUT GR. 8	6
4	BUSH	H TRANS	6
3	PIN	EN-8D/15B25	6
2	BUSH HALF	CI IS-210 Gr.FG-260	1
1	PIN HALF	CI IS-210 Gr.FG-260	1
SR NO	DESCRIPTION	MATERIAL	QTY

REV.	DMRN NO.	DESCRIPTION	REV. BY	APPD. BY	DATE

TITLE: **RB-162-6 /----- CPLG.**

MATERIAL: REFER TABLE

CUSTOMER NAME:

SCALE: NTS REF. No.: -

**RAHI** RATHI TRANSPower PVT LTD PUNE 411014

DRG. No.: -

This drawing / information / design is the property of Rathi Transpower Pvt. Ltd. It is confidential & must not be made public or copied without prior written authorization & is subjected to recall at any time. Acceptance of this drawing constitutes full agreement with these conditions