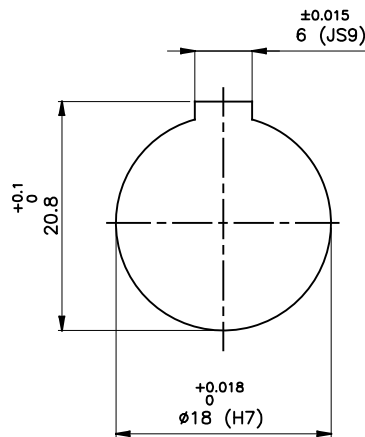
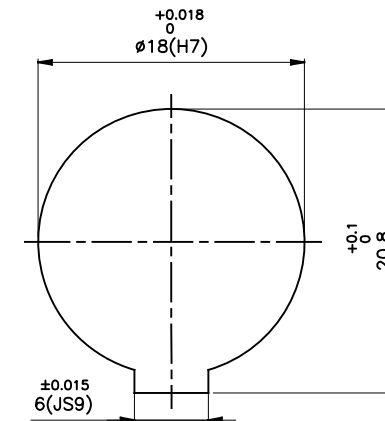
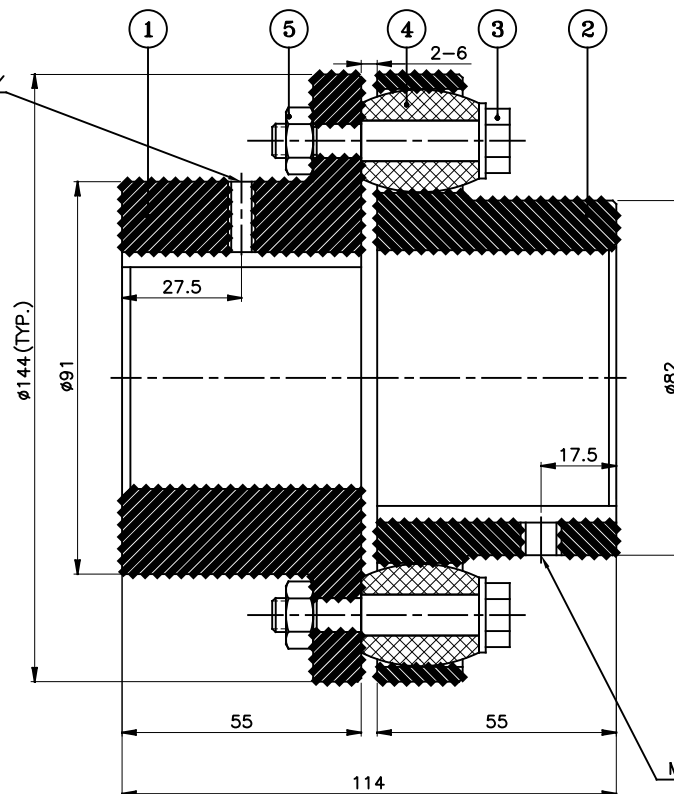


J I H G F E D C B A



DRIVE END



DRIVEN END

APPLICATION DETAILS

APPLICATION	-
RATED POWER	-
RATED SPEED	-
RATED TORQUE	-
A.S.F.	-

COUPLING SPECIFICATIONS

COUPLING RATING	8.3 kW @ 100 RPM
RATED TORQUE	0.788 kNm.
PEAK TORQUE	1.576 kNm.
MAX. SPEED	4900 rpm.
MAX. BORE	PIN HALF 60 mm BUSH HALF 50 mm
WEIGHT(Approx.)	6.15 Kg
INERTIA (WK ²)	0.0172 Kgm ²

COUPLING HUBS DYNAMICALLY BALANCED TO GR. 6.3 AS PER ISO: 1940-1.

MAX. MISALIGNMENTS

AXIAL DEFLECTION	± 2 mm.
ANGULAR DEFLECTION	1°
RADIAL DEFLECTION	0.4 mm

5	NYLOCK NUT	NYLOCK NUT GR. 8	6
4	BUSH	H TRANS	6
3	PIN	EN-8D/15B25	6
2	BUSH HALF	CI IS-210 Gr.FG-260	1
1	PIN HALF	CI IS-210 Gr.FG-260	1
SR NO	DESCRIPTION	MATERIAL	QTY

REV.	DMRN NO.	DESCRIPTION	REV. BY	APPD. BY	DATE

TITLE:	RB-144-6 /----- CPLG.	MATERIAL:	REFER TABLE	AUTHORITY	INITIALS	SIGN	DATE
CUSTOMER NAME:				DRAWN	-	-	-
				CHECKED	-	-	-
				APPROVED	-	-	-
				SCALE: NTS	REF. No.:	-	-



RATHI TRANSPower PVT LTD
PUNE 411014

DRG. No.:
-

This drawing / information / design is the property of Rathi Transpower Pvt. Ltd. It is confidential & must not be made public or copied without prior written authorization & is subjected to recall at any time. Acceptance of this drawing constitutes full agreement with these conditions