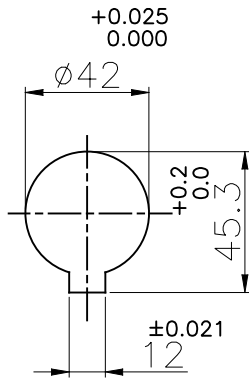
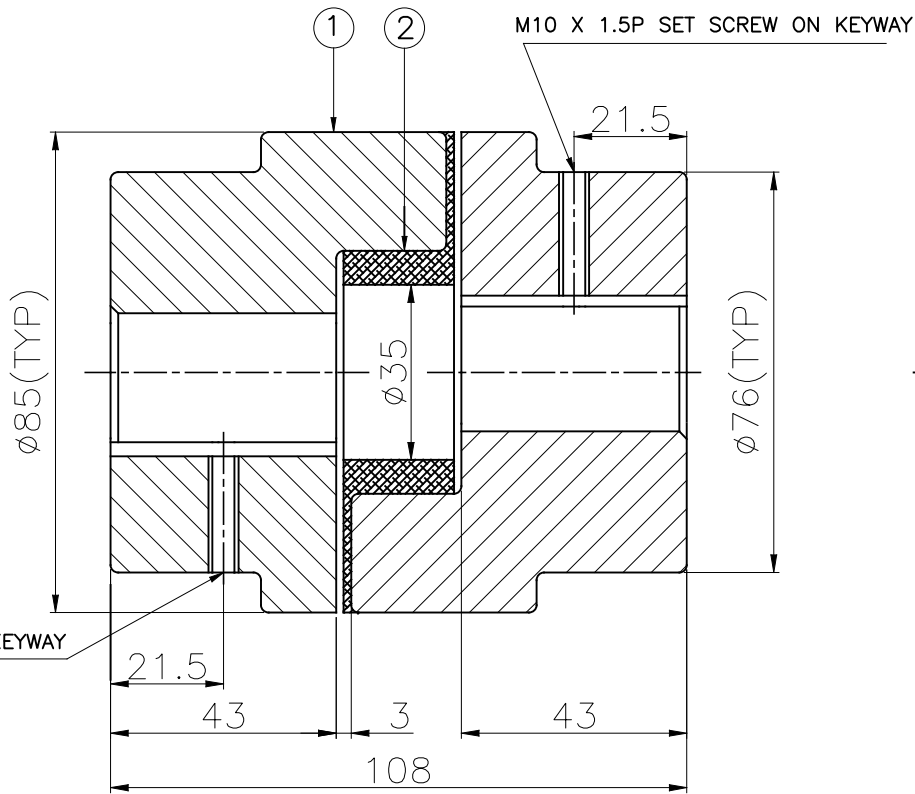
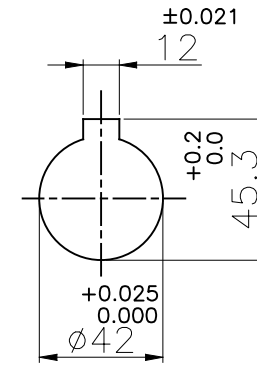


J I H G F E D C B A

DRIVE END



DRIVEN END



M10 X 1.5P SET SCREW ON KEYWAY

APPLICATION DETAILS

| | |
|--------------|-------|
| APPLICATION | - |
| RATED POWER | - KW |
| RATED SPEED | - RPM |
| RATED TORQUE | - Nm |
| A.S.F. | - |

COUPLING SPECIFICATIONS

| | |
|----------------------------|--|
| COUPLING RATING | 1.4 KW AT 100 RPM |
| RATED TORQUE | 133.5 Nm |
| MAX. BORE | 42 mm |
| WEIGHT (Approx.) | 3.20 Kg |
| INERTIA (WK ²) | 2.77X10 ⁻⁴ Kgm ² |

CPLG HUBS DYNAMICALLY BALANCED TO GR.6.3 AS PER ISO 1940- 1.

MAX. MISALIGNMENTS

| | |
|--------------------|---------|
| AXIAL DEFLECTION | ±1.5 mm |
| ANGULAR DEFLECTION | 1° |
| RADIAL DEFLECTION | 0.4 mm |

| 2 | SPIDER | POLYURETHANE | 1 |
|-------|-------------|---------------------|------|
| 1 | HUB | CI IS 210 GR FG 260 | 2 |
| SR NO | DESCRIPTION | MATERIAL | QTY. |

| REV. | DMRN NO. | DESCRIPTION | REV. BY | DATE |
|------|----------|-------------|---------|------|
| | | | | |

TITLE: **L-110/----- CPLG** MATERIAL: **REFER TABLE**

CUSTOMER NAME: _____

| | | | |
|-----------|----------|------|------|
| AUTHORITY | INITIALS | SIGN | DATE |
| DRAWN | - | - | - |
| CHECKED | - | - | - |
| APPROVED | - | - | - |

SCALE: NTS REF. No.: _____

RATHI RATHI TRANSPower PVT LTD PUNE 411014 DRG. No.: _____/_____-

This drawing / information / design is the property of Rathi Transpower Pvt. Ltd. It is confidential & must not be made public or copied without prior written authorization & is subjected to recall at any time. Acceptance of this drawing constitutes full agreement with these conditions