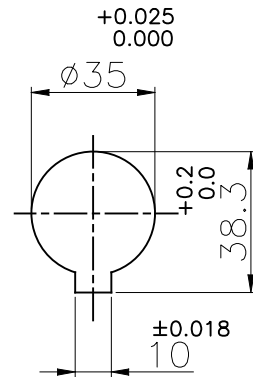
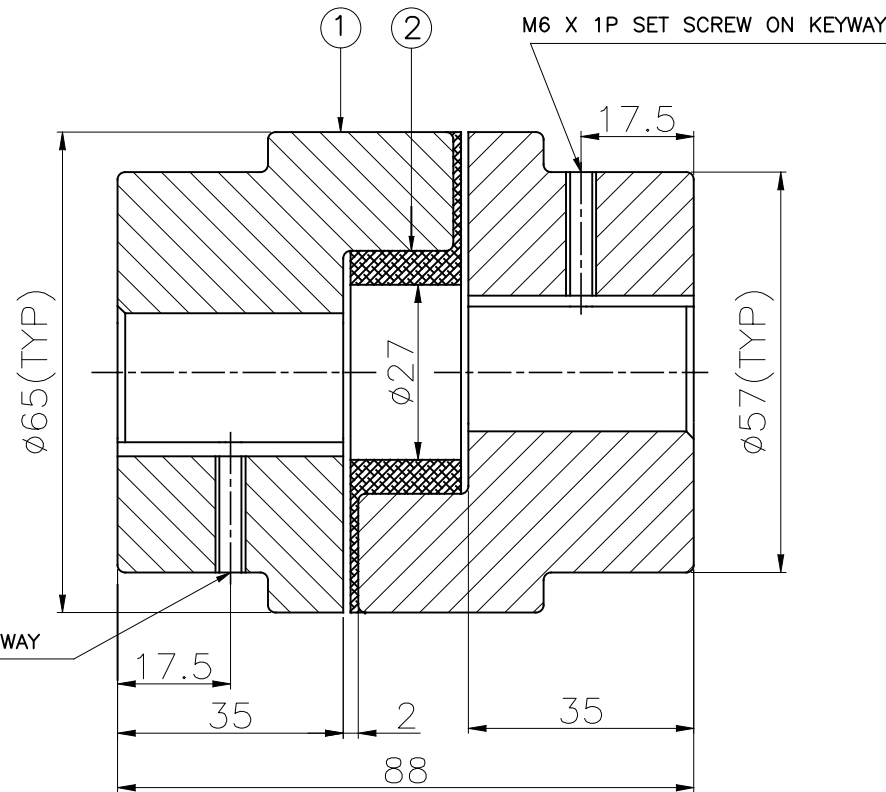
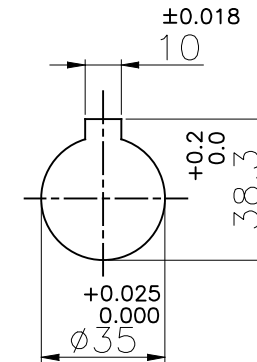


J I H G F E D C B A

DRIVE END



DRIVEN END



M6 X 1P SET SCREW ON KEYWAY

APPLICATION DETAILS

APPLICATION	-
RATED POWER	- KW
RATED SPEED	- RPM
RATED TORQUE	- Nm
A.S.F.	-

COUPLING SPECIFICATIONS

COUPLING RATING	1.2 KW AT 100 RPM
RATED TORQUE	116 Nm
MAX. BORE	35 mm
WEIGHT (Approx.)	1.50 Kg
INERTIA (WK ²)	7.67X10 ⁻⁵ Kgm ²

CPLG HUBS DYNAMICALLY BALANCED TO GR.6.3 AS PER ISO 1940- 1.

MAX. MISALIGNMENTS

AXIAL DEFLECTION	±1 mm
ANGULAR DEFLECTION	1°
RADIAL DEFLECTION	0.4 mm

2	SPIDER	H TRANS	1
1	HUB	CI IS 210 GR FG 260	2
SR NO	DESCRIPTION	MATERIAL	QTY.

REV.	DMRN NO.	DESCRIPTION	REV. BY	DATE	TITLE: L-100/----- CPLG	MATERIAL: REFER TABLE	AUTHORITY	INITIALS	SIGN	DATE
					CUSTOMER NAME:		DRAWN	-	-	-
							CHECKED	-	-	-
							APPROVED	-	-	-
							SCALE:NTS	REF. No.:		
										DRG. No.:
										-----/-



RATHI TRANSPower PVT LTD
PUNE 411014

DRG. No.:
-----/-

This drawing / information / design is the property of Rathi Transpower Pvt. Ltd. It is confidential & must not be made public or copied without prior written authorization & is subjected to recall at any time. Acceptance of this drawing constitutes full agreement with these conditions